

PYDC1 rabbit pAb

Catalog No :	YT6579
Reactivity :	Human
Applications :	IHC;IF
Target :	PYDC1
Fields :	>>NOD-like receptor signaling pathway
Gene Name :	PYDC1 ASC2 ASCI POP1 PYC1
Protein Name :	PYDC1
Human Gene Id :	260434
Human Swiss Prot No :	Q8WXC3
Immunogen :	Synthesized peptide derived from human PYDC1 AA range: 25-75
Specificity :	This antibody detects endogenous levels of PYDC1 at Human
Formulation :	Liquid in PBS containing 50% glycerol, 0.5% BSA and 0.02% sodium azide.
Source :	Polyclonal, Rabbit,IgG
Dilution :	IHC 1:50-200. IF 1:50-200
Purification :	The antibody was affinity-purified from rabbit antiserum by affinity-chromatography using epitope-specific immunogen.
Concentration :	1 mg/ml
Storage Stability :	-15°C to -25°C/1 year(Do not lower than -25°C)
Molecularweight :	10kD

Function :

function: Associates with apoptosis-associated specklike protein containing a CARD domain (ASC) and modulates its ability to collaborate with pyrin and cryopyrin in NF-kappa-B and pro-caspase-1 activation. Suppresses kinase activity of NF-kappa-B inhibitor kinase (IKK) complex, expression of NF-kappa-B inducible genes and inhibits NF-kappa-B activation by cytokines and LPS.,PTM: Phosphorylated.,similarity: Contains 1 DAPIN domain.,subunit: Interacts with PYCARD/ASC.,tissue specificity: Predominantly expressed in monocytes, macrophages and granulocytes.,

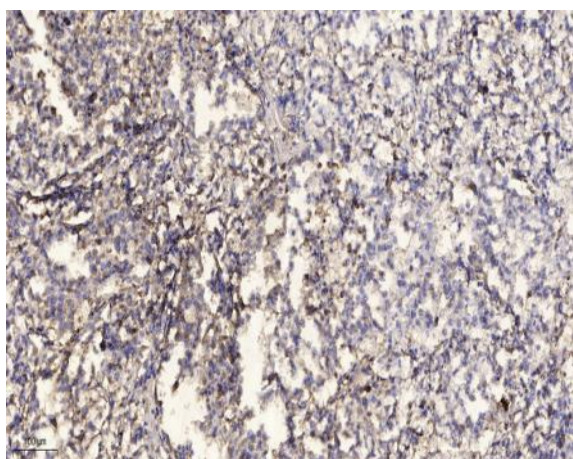
Subcellular Location :

Cytoplasm . Recruited to specks formed by PYCARD within the cytoplasm. .

Expression :

Predominantly expressed in monocytes, macrophages and granulocytes.

Products Images



Immunohistochemical analysis of paraffin-embedded human Squamous cell carcinoma of lung. 1, Antibody was diluted at 1:200(4° overnight). 2, Tris-EDTA,pH9.0 was used for antigen retrieval. 3,Secondary antibody was diluted at 1:200(room temperature, 45min).