

## SNPC1 rabbit pAb

<b>Catalog No :</b>	YT6574
<b>Reactivity :</b>	Human;Mouse
<b>Applications :</b>	WB;ELISA;IHC
<b>Target :</b>	SNPC1
<b>Gene Name :</b>	SNAPC1 SNAP43
<b>Protein Name :</b>	SNPC1
<b>Human Gene Id :</b>	6617
<b>Human Swiss Prot No :</b>	Q16533
<b>Mouse Gene Id :</b>	75627
<b>Mouse Swiss Prot No :</b>	Q8K0S9
<b>Immunogen :</b>	Synthesized peptide derived from human SNPC1 AA range: 44-94
<b>Specificity :</b>	This antibody detects endogenous levels of SNPC1 at Human/Mouse
<b>Formulation :</b>	Liquid in PBS containing 50% glycerol, 0.5% BSA and 0.02% sodium azide.
<b>Source :</b>	Polyclonal, Rabbit,IgG
<b>Dilution :</b>	WB 1:500-2000;IHC 1:50-300; ELISA 2000-20000
<b>Purification :</b>	The antibody was affinity-purified from rabbit antiserum by affinity-chromatography using epitope-specific immunogen.
<b>Concentration :</b>	1 mg/ml
<b>Storage Stability :</b>	-15°C to -25°C/1 year(Do not lower than -25°C)

**Molecularweight :** 40kD

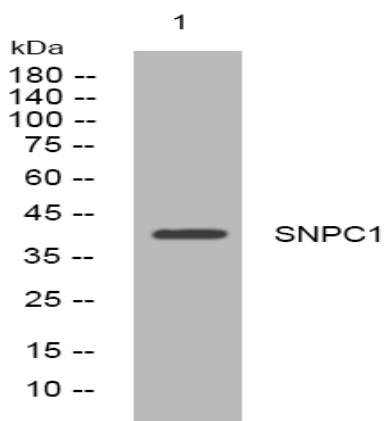
**Function :**

function:Part of the SNAPc complex required for the transcription of both RNA polymerase II and III small-nuclear RNA genes. Binds to the proximal sequence element (PSE), a non-TATA-box basal promoter element common to these 2 types of genes. Recruits TBP and BRF2 to the U6 snRNA TATA box.,subunit:Part of the SNAPc complex composed of 5 subunits: SNAPC1, SNAPC2, SNAPC3, SNAPC4 and SNAPC5. SNAPC1 interacts with SNAPC3, SNAPC4 and TBP.,

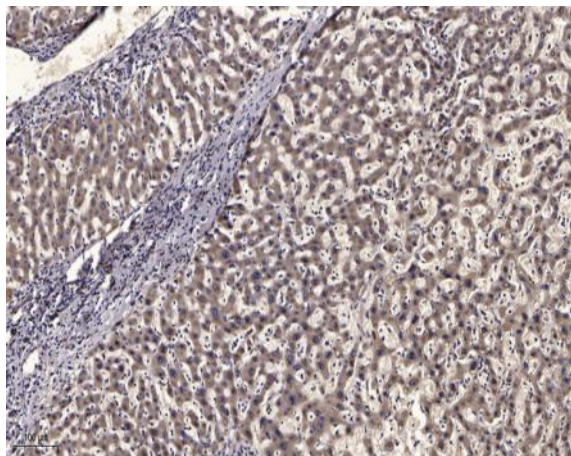
**Subcellular Location :**

Nucleus.

## Products Images



Western blot analysis of lysates from SH-SY5Y cells, primary antibody was diluted at 1:1000, 4° over night



Immunohistochemical analysis of paraffin-embedded human liver cancer. 1, Antibody was diluted at 1:200(4° overnight). 2, Tris-EDTA,pH9.0 was used for antigen retrieval. 3,Secondary antibody was diluted at 1:200(room temperature, 45min).