

ZBED6 rabbit pAb

Catalog No :	YT6573
Reactivity :	Human;Mouse
Applications :	WB
Target :	ZBED6
Gene Name :	ZBED6
Protein Name :	ZBED6
Human Gene Id :	100381270
Human Swiss Prot No :	P86452
Mouse Gene Id :	667118
Mouse Swiss Prot No :	D2EAC2
Immunogen :	Synthesized peptide derived from human ZBED6 AA range :130-190
Specificity :	This antibody detects endogenous levels of ZBED6 at Human/Mouse
Formulation :	Liquid in PBS containing 50% glycerol, 0.5% BSA and 0.02% sodium azide.
Source :	Polyclonal, Rabbit,IgG
Dilution :	WB 1:500-2000
Purification :	The antibody was affinity-purified from rabbit antiserum by affinity-chromatography using epitope-specific immunogen.
Concentration :	1 mg/ml
Storage Stability :	-15°C to -25°C/1 year(Do not lower than -25°C)

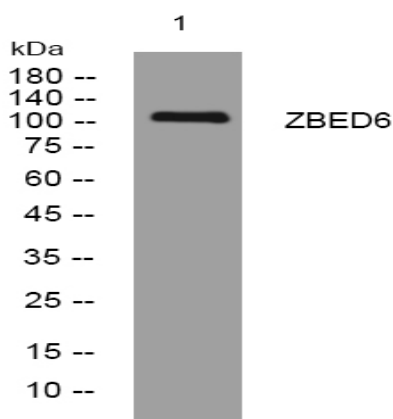
Molecularweight : 108kD

Background : The protein encoded by this transposon-derived intronless gene is a transcriptional repressor that binds to the consensus sequence 5'-GCTCGC-3'. The encoded protein has been shown to repress IGF2 transcription. This gene is located within the first intron of the ZC3H11A gene. [provided by RefSeq, Jul 2016],

Subcellular Location : Nucleus . Nucleus, nucleolus . Cytoplasm . Located predominantly in the nucleolus but is also dispersed throughout the nucleus (By similarity). Mainly cytoplasmic in insulin- and glucagon-positive islet pancreatic cells, however nuclear localization is evidence in some pancreatic endocrine cells (PubMed:24043816) .

Expression : Expressed in pancreatic islet cells (at protein level).

Products Images



Western blot analysis of lysates from HEK293 cells, primary antibody was diluted at 1:1000, 4° over night