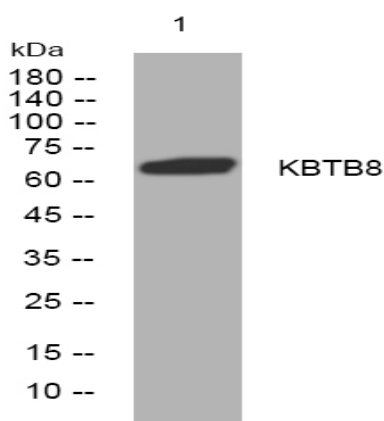


**KBTB8 rabbit pAb**

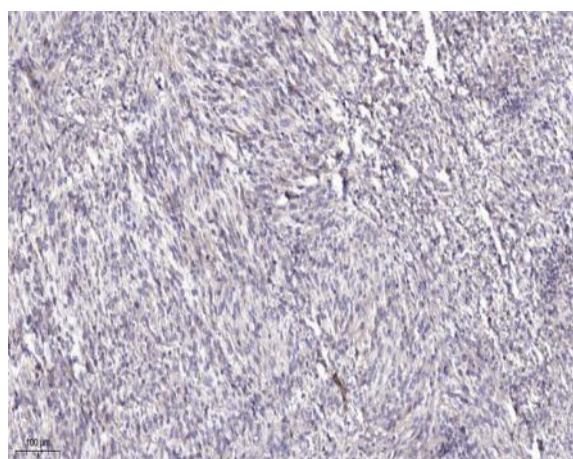
<b>Catalog No :</b>	YT6572
<b>Reactivity :</b>	Human;Mouse;Rat
<b>Applications :</b>	WB;ELISA;IHC
<b>Target :</b>	KBTB8
<b>Gene Name :</b>	KBTBD8 KIAA1842 TAKRP
<b>Protein Name :</b>	KBTB8
<b>Human Gene Id :</b>	84541
<b>Human Swiss Prot No :</b>	Q8NFY9
<b>Mouse Gene Id :</b>	243574
<b>Mouse Swiss Prot No :</b>	Q3UQV5
<b>Rat Gene Id :</b>	500262
<b>Rat Swiss Prot No :</b>	B1H285
<b>Immunogen :</b>	Synthesized peptide derived from human KBTB8 AA range: 445-495
<b>Specificity :</b>	This antibody detects endogenous levels of KBTB8 at Human/Mouse/Rat
<b>Formulation :</b>	Liquid in PBS containing 50% glycerol, 0.5% BSA and 0.02% sodium azide.
<b>Source :</b>	Polyclonal, Rabbit,IgG
<b>Dilution :</b>	WB 1:500-2000;IHC 1:50-300; ELISA 2000-20000
<b>Purification :</b>	The antibody was affinity-purified from rabbit antiserum by affinity-chromatography using epitope-specific immunogen.

<b>Concentration :</b>	1 mg/ml
<b>Storage Stability :</b>	-15°C to -25°C/1 year(Do not lower than -25°C)
<b>Molecularweight :</b>	66kD
<b>Function :</b>	similarity:Contains 1 BACK (BTB/Kelch associated) domain.,similarity:Contains 1 BTB (POZ) domain.,similarity:Contains 5 Kelch repeats.,
<b>Subcellular Location :</b>	Cytoplasm, cytoskeleton, spindle . Golgi apparatus . Translocates to the spindle apparatus during mitosis. .

## Products Images



Western blot analysis of lysates from MDA-MB cells, primary antibody was diluted at 1:1000, 4° over night



Immunohistochemical analysis of paraffin-embedded human Colon cancer. 1, Antibody was diluted at 1:200(4° overnight). 2, Tris-EDTA,pH9.0 was used for antigen retrieval. 3,Secondary antibody was diluted at 1:200(room temperature, 45min).