

MYT1L rabbit pAb

Catalog No :	YT6570
Reactivity :	Human;Mouse;Rat
Applications :	WB;ELISA;IHC
Target :	MYT1L
Gene Name :	MYT1L KIAA1106
Protein Name :	MYT1L
Human Gene Id :	23040
Human Swiss Prot No :	Q9UL68
Mouse Swiss Prot No :	P97500
Rat Gene Id :	116668
Rat Swiss Prot No :	P70475
Immunogen :	Synthesized peptide derived from human MYT1L AA range: 595-645
Specificity :	This antibody detects endogenous levels of MYT1L at Human/Mouse/Rat
Formulation :	Liquid in PBS containing 50% glycerol, 0.5% BSA and 0.02% sodium azide.
Source :	Polyclonal, Rabbit,IgG
Dilution :	WB 1:500-2000;IHC 1:50-300; ELISA 2000-20000
Purification :	The antibody was affinity-purified from rabbit antiserum by affinity-chromatography using epitope-specific immunogen.
Concentration :	1 mg/ml

Storage Stability : -15°C to -25°C/1 year(Do not lower than -25°C)

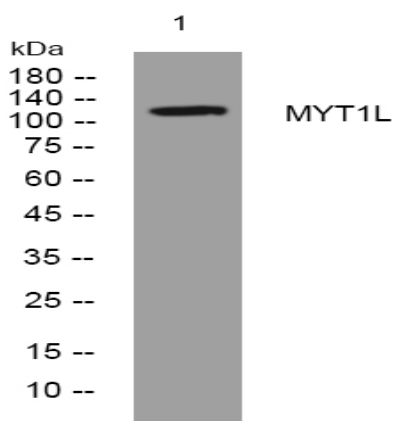
Molecularweight : 130kD

Background : This gene encodes a member of the zinc finger superfamily of transcription factors. The encoded protein belongs to a novel class of cystein-cystein-histidine-cystein zinc finger proteins that function in the developing mammalian central nervous system. Forced expression of this gene in combination with the basic helix-loop-helix transcription factor NeuroD1 and the transcription factors POU class 3 homeobox 2 and achaete-scute family basic helix-loop-helix transcription factor 1 can convert fetal and postnatal human fibroblasts into induced neuronal cells, which are able to generate action potentials. Mutations in this gene have been associated with autosomal mental retardation-39 and autism spectrum disorder. Alternative splicing results in multiple variants. [provided by RefSeq, Aug 2016],

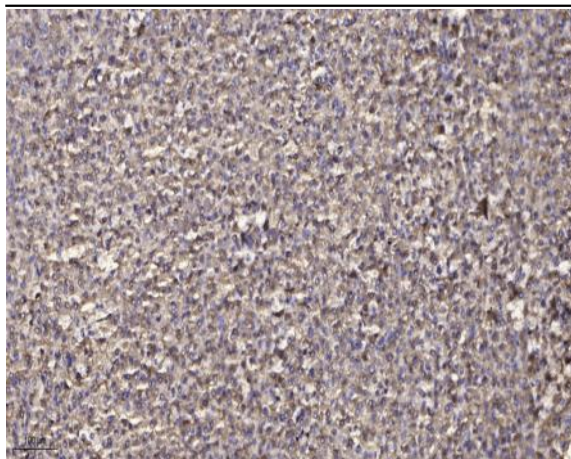
Function : function:May function as a panneural transcription factor associated with neuronal differentiation. May play a role in the development of neurons and oligodendroglia in the CNS.,similarity:Contains 6 C2HC-type zinc fingers.,

Subcellular Location : Nucleus . Chromosome . Preferentially binds to DNA binding sites that are in an open chromatin configuration. .

Products Images



Western blot analysis of lysates from A431 cells, primary antibody was diluted at 1:1000, 4° over night



Immunohistochemical analysis of paraffin-embedded human liver cancer. 1, Antibody was diluted at 1:200(4° overnight). 2, Tris-EDTA,pH9.0 was used for antigen retrieval. 3,Secondary antibody was diluted at 1:200(room temperature, 45min).