

BN3D2 rabbit pAb

Catalog No :	YT6558
Reactivity :	Human;Mouse;Rat
Applications :	WB
Target :	BN3D2
Gene Name :	BCDIN3D
Protein Name :	BN3D2
Human Gene Id :	144233
Human Swiss Prot No :	Q7Z5W3
Mouse Gene Id :	75284
Mouse Swiss Prot No :	Q91YP1
Rat Swiss Prot No :	D4ABH7
Immunogen :	Synthesized peptide derived from human BN3D2 AA range: 192-242
Specificity :	This antibody detects endogenous levels of BN3D2 at Human/Mouse/Rat
Formulation :	Liquid in PBS containing 50% glycerol, 0.5% BSA and 0.02% sodium azide.
Source :	Polyclonal, Rabbit,IgG
Dilution :	WB 1[?]500-2000
Purification :	The antibody was affinity-purified from rabbit antiserum by affinity-chromatography using epitope-specific immunogen.
Concentration :	1 mg/ml

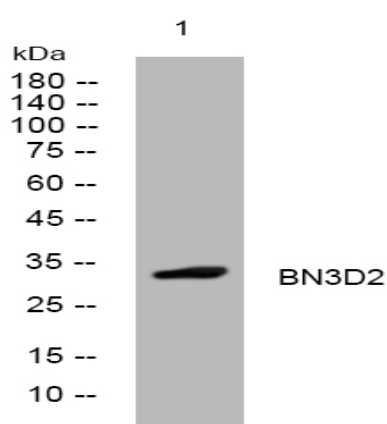
Storage Stability : -15°C to -25°C/1 year(Do not lower than -25°C)

Molecularweight : 32kD

Function : function:Probable methyltransferase.,similarity:Belongs to the methyltransferase superfamily.,similarity:Contains 1 BIN3 domain.,

Subcellular Location : Cytoplasm .

Products Images



Western blot analysis of lysates from Jurkat cells, primary antibody was diluted at 1:1000, 4° over night