

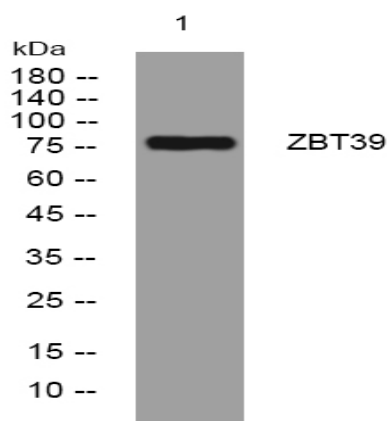
ZBT39 rabbit pAb

Catalog No :	YT6555
Reactivity :	Human
Applications :	WB
Target :	ZBT39
Gene Name :	ZBTB39 KIAA0352
Protein Name :	ZBT39
Human Gene Id :	9880
Human Swiss Prot No :	O15060
Immunogen :	Synthesized peptide derived from human ZBT39 AA range: 535-585
Specificity :	This antibody detects endogenous levels of ZBT39 at Human
Formulation :	Liquid in PBS containing 50% glycerol, 0.5% BSA and 0.02% sodium azide.
Source :	Polyclonal, Rabbit,IgG
Dilution :	WB 1:500-2000
Purification :	The antibody was affinity-purified from rabbit antiserum by affinity-chromatography using epitope-specific immunogen.
Concentration :	1 mg/ml
Storage Stability :	-15°C to -25°C/1 year(Do not lower than -25°C)
Molecularweight :	78kD
Function :	function:May be involved in transcriptional regulation.,similarity:Belongs to the krueppel C2H2-type zinc-finger protein family.,similarity:Contains 1 BTB (POZ) domain.,similarity:Contains 8 C2H2-type zinc fingers.,

**Subcellular
Location :**

Nucleus .

Products Images



Western blot analysis of lysates from A431 cells, primary antibody was diluted at 1:1000, 4° over night