

## CB065 rabbit pAb

<b>Catalog No :</b>	YT6552
<b>Reactivity :</b>	Human;Mouse
<b>Applications :</b>	WB
<b>Target :</b>	CB065
<b>Gene Name :</b>	C2orf65
<b>Protein Name :</b>	CB065
<b>Human Gene Id :</b>	130951
<b>Human Swiss Prot No :</b>	Q8TC57
<b>Mouse Gene Id :</b>	110958
<b>Mouse Swiss Prot No :</b>	Q9Z0E1
<b>Immunogen :</b>	Synthesized peptide derived from human CB065 AA range: 1-51
<b>Specificity :</b>	This antibody detects endogenous levels of CB065 at Human/Mouse
<b>Formulation :</b>	Liquid in PBS containing 50% glycerol, 0.5% BSA and 0.02% sodium azide.
<b>Source :</b>	Polyclonal, Rabbit,IgG
<b>Dilution :</b>	WB 1:500-2000
<b>Purification :</b>	The antibody was affinity-purified from rabbit antiserum by affinity-chromatography using epitope-specific immunogen.
<b>Concentration :</b>	1 mg/ml
<b>Storage Stability :</b>	-15°C to -25°C/1 year(Do not lower than -25°C)

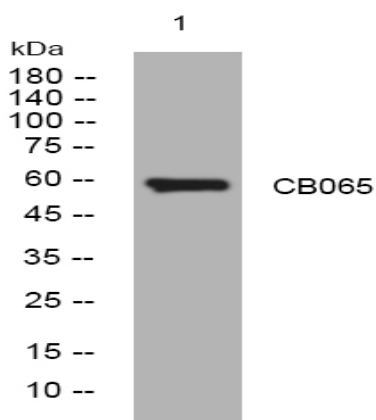
**Molecularweight :** 58kD

**Background :** This gene encodes a protein that is likely to function in progression of meiosis. A similar protein in mouse plays a role in gametogenesis in both sexes. Alternate splicing results in multiple transcript variants encoding different isoforms. [provided by RefSeq, Jul 2013],

**Function :** function:May be involved in gametogenesis.,

**Subcellular Location :** Cytoplasm .

## Products Images



Western blot analysis of lysates from HeLa cells, primary antibody was diluted at 1:1000, 4 ° over night