

## ZF161 rabbit pAb

<b>Catalog No :</b>	YT6548
<b>Reactivity :</b>	Human;Mouse
<b>Applications :</b>	WB
<b>Target :</b>	ZF161
<b>Gene Name :</b>	ZFP161 ZBTB14 ZNF478
<b>Protein Name :</b>	ZF161
<b>Human Gene Id :</b>	7541
<b>Human Swiss Prot No :</b>	O43829
<b>Mouse Gene Id :</b>	22666
<b>Mouse Swiss Prot No :</b>	Q08376
<b>Immunogen :</b>	Synthesized peptide derived from human ZF161 AA range: 116-166
<b>Specificity :</b>	This antibody detects endogenous levels of ZF161 at Human/Mouse
<b>Formulation :</b>	Liquid in PBS containing 50% glycerol, 0.5% BSA and 0.02% sodium azide.
<b>Source :</b>	Polyclonal, Rabbit,IgG
<b>Dilution :</b>	WB 1:500-2000
<b>Purification :</b>	The antibody was affinity-purified from rabbit antiserum by affinity-chromatography using epitope-specific immunogen.
<b>Concentration :</b>	1 mg/ml
<b>Storage Stability :</b>	-15°C to -25°C/1 year(Do not lower than -25°C)

**Molecularweight :** 49kD

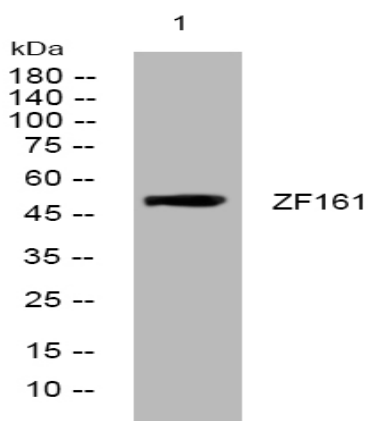
**Function :**

domain:The BTB/POZ domain seems to direct the protein to discrete regions in the nucleus.,function:Transcriptional repressor of c-Myc and thymidine kinase promoters (By similarity). Transcriptional activator of the dopamine transporter (DAT), binding it's promoter at the consensus sequence 5'-CCTGCACAGTTCACGGA-3'.,similarity:Belongs to the krueppel C2H2-type zinc-finger protein family.,similarity:Contains 1 BTB (POZ) domain.,similarity:Contains 5 C2H2-type zinc fingers.,

**Subcellular Location :**

Nucleus . Colocalizes with ZBTB21 in nucleus in HEK293 cells.

## Products Images



Western blot analysis of lysates from U2OS cells, primary antibody was diluted at 1:1000, 4° over night