

GLDN rabbit pAb

Catalog No :	YT6545
Reactivity :	Human;Mouse;Rat
Applications :	WB
Target :	GLDN
Gene Name :	GLDN COLM UNQ9339/PRO34011
Protein Name :	GLDN
Human Gene Id :	342035
Human Swiss Prot No :	Q6ZMI3
Mouse Gene Id :	235379
Mouse Swiss Prot No :	Q8BMF8
Rat Gene Id :	315675
Rat Swiss Prot No :	Q80WL1
Immunogen :	Synthesized peptide derived from human GLDN AA range: 461-511
Specificity :	This antibody detects endogenous levels of GLDN at Human/Mouse/Rat
Formulation :	Liquid in PBS containing 50% glycerol, 0.5% BSA and 0.02% sodium azide.
Source :	Polyclonal, Rabbit,IgG
Dilution :	WB 1:500-2000
Purification :	The antibody was affinity-purified from rabbit antiserum by affinity-chromatography using epitope-specific immunogen.

Concentration : 1 mg/ml

Storage Stability : -15°C to -25°C/1 year(Do not lower than -25°C)

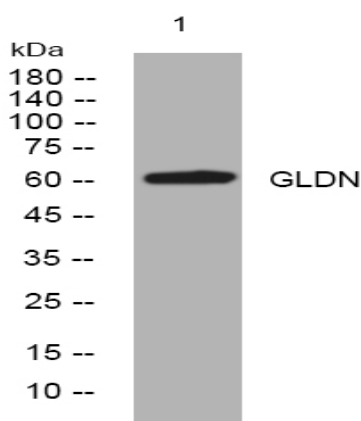
Molecularweight : 61kD

Function : domain:The olfactomedin-like domain mediates NFASC/neurofascin and NRCAM binding.,function:Plays a role in the formation of the nodes of Ranvier along myelinated axons. Probable NRCAM and NFASC/neurofascin ligand which may provide a glial positional clue required for the proper molecular assembly of the nodes of Ranvier.,similarity:Contains 1 olfactomedin-like domain.,similarity:Contains 2 collagen-like domains.,subcellular location:Localizes to the nodes of Ranvier.,subunit:Interacts with NFASC/neurofascin and NRCAM.,tissue specificity:Specifically expressed in spinal cord, brain, placenta and sciatic nerve. More abundant in peripheral than central nervous system.,

Subcellular Location : Cell membrane ; Single-pass type II membrane protein . Cell projection, axon . Detected at the nodes of Ranvier. Detected at immature heminodes. .; [Gliomedin shedded ectodomain]: Secreted . Secreted, extracellular space, extracellular matrix . Proteolytic processing gives rise to a soluble extracellular domain that is secreted. The gliomedin shedded ectodomain localizes to the nodes of Ranvier. .

Expression : Specifically expressed in spinal cord, brain, placenta and sciatic nerve. More abundant in peripheral than central nervous system.

Products Images



Western blot analysis of lysates from KB cells, primary antibody was diluted at 1:1000, 4° over night