

## SPAC7 rabbit pAb

<b>Catalog No :</b>	YT6540
<b>Reactivity :</b>	Human;Mouse
<b>Applications :</b>	WB;ELISA;IHC
<b>Target :</b>	SPAC7
<b>Gene Name :</b>	SPACA7 C13orf28
<b>Protein Name :</b>	SPAC7
<b>Human Gene Id :</b>	122258
<b>Human Swiss Prot No :</b>	Q96KW9
<b>Mouse Gene Id :</b>	78634
<b>Mouse Swiss Prot No :</b>	Q9D2S4
<b>Immunogen :</b>	Synthesized peptide derived from human SPAC7 AA range: 115-165
<b>Specificity :</b>	This antibody detects endogenous levels of SPAC7 at Human/Mouse
<b>Formulation :</b>	Liquid in PBS containing 50% glycerol, 0.5% BSA and 0.02% sodium azide.
<b>Source :</b>	Polyclonal, Rabbit,IgG
<b>Dilution :</b>	WB 1:500-2000;IHC 1:50-300; ELISA 2000-20000
<b>Purification :</b>	The antibody was affinity-purified from rabbit antiserum by affinity-chromatography using epitope-specific immunogen.
<b>Concentration :</b>	1 mg/ml
<b>Storage Stability :</b>	-15°C to -25°C/1 year(Do not lower than -25°C)

**Molecularweight :** 21kD

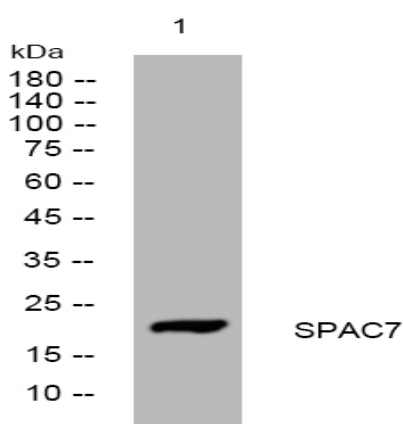
**Subcellular Location :**

Secreted . Cytoplasmic vesicle, secretory vesicle, acrosome . Cytoplasmic vesicle, secretory vesicle, acrosome lumen . Localized in perinuclear pro-acrosomal granules in round spermatides. Localized between the inner and outer acrosomal membranes (matrix or lumen) in spermatozoa. Secreted during acrosome exocytosis. .

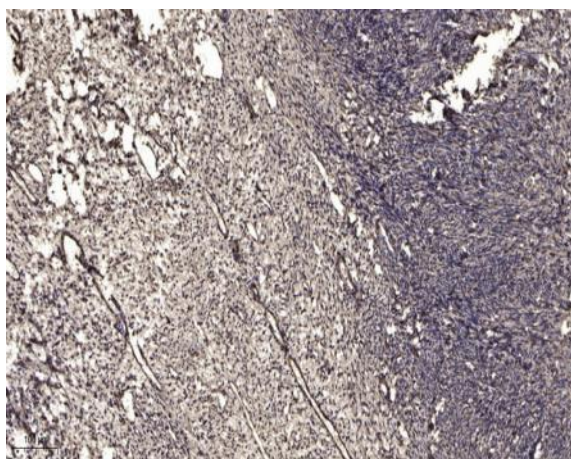
**Expression :**

Expressed in spermatozoa (at protein level) (PubMed:22495889).

## Products Images



Western blot analysis of lysates from VEC cells, primary antibody was diluted at 1:1000, 4° over night



Immunohistochemical analysis of paraffin-embedded human oophoroma. 1, Antibody was diluted at 1:200(4° overnight). 2, Tris-EDTA,pH9.0 was used for antigen retrieval. 3,Secondary antibody was diluted at 1:200(room temperature, 45min).