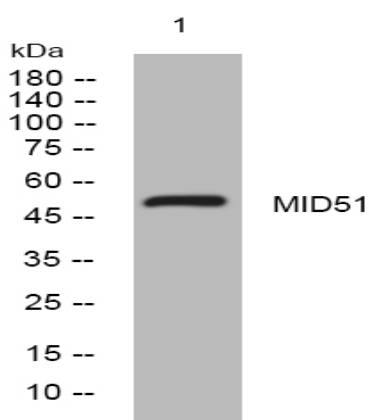


MID51 rabbit pAb

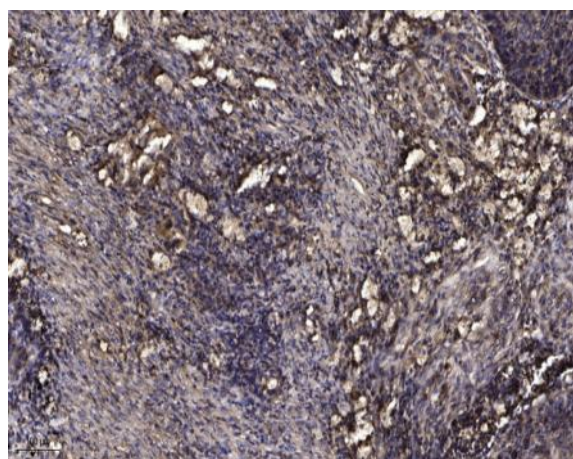
Catalog No :	YT6538
Reactivity :	Human;Mouse;Rat
Applications :	WB;ELISA;IHC
Target :	MID51
Gene Name :	SMCR7L MID51 MIEF1
Protein Name :	MID51
Human Gene Id :	54471
Human Swiss Prot No :	Q9NQG6
Mouse Gene Id :	239555
Mouse Swiss Prot No :	Q8BGV8
Rat Gene Id :	315141
Rat Swiss Prot No :	Q5XIS8
Immunogen :	Synthesized peptide derived from human MID51 AA range: 93-143
Specificity :	This antibody detects endogenous levels of MID51 at Human/Mouse/Rat
Formulation :	Liquid in PBS containing 50% glycerol, 0.5% BSA and 0.02% sodium azide.
Source :	Polyclonal, Rabbit,IgG
Dilution :	WB 1:500-2000;IHC 1:50-300; ELISA 2000-20000
Purification :	The antibody was affinity-purified from rabbit antiserum by affinity-chromatography using epitope-specific immunogen.

Concentration :	<u>1 mg/ml</u>
Storage Stability :	<u>-15°C to -25°C/1 year(Do not lower than -25°C)</u>
Molecularweight :	<u>51kD</u>
Function :	<u>similarity:Belongs to the SMCR7 family.,</u>
Subcellular Location :	<u>Mitochondrion outer membrane ; Single-pass membrane protein .</u>
Expression :	<u>Expression is relatively high in heart, skeletal muscle, pancreas and kidney.</u>

Products Images



Western blot analysis of lysates from U2OS cells, primary antibody was diluted at 1:1000, 4° over night



Immunohistochemical analysis of paraffin-embedded human Squamous cell carcinoma of lung. 1, Antibody was diluted at 1:200(4° overnight). 2, Tris-EDTA,pH9.0 was used for antigen retrieval. 3,Secondary antibody was diluted at 1:200(room temperature, 45min).