

PURA1 rabbit pAb

Catalog No :	YT6536
Reactivity :	Human;Mouse
Applications :	WB;IHC
Target :	PURA1
Fields :	>>Purine metabolism;>>Alanine, aspartate and glutamate metabolism;>>Metabolic pathways;>>Nucleotide metabolism;>>Biosynthesis of cofactors
Gene Name :	ADSSL1 ADSS1
Protein Name :	PURA1
Human Gene Id :	122622
Human Swiss Prot No :	Q8N142
Mouse Gene Id :	11565
Mouse Swiss Prot No :	P28650
Immunogen :	Synthesized peptide derived from human PURA1 AA range: 14-64
Specificity :	This antibody detects endogenous levels of PURA1 at Human/Mouse
Formulation :	Liquid in PBS containing 50% glycerol, 0.5% BSA and 0.02% sodium azide.
Source :	Polyclonal, Rabbit,IgG
Dilution :	WB 1:500-2000;IHC 1:50-300
Purification :	The antibody was affinity-purified from rabbit antiserum by affinity-chromatography using epitope-specific immunogen.
Concentration :	1 mg/ml

Storage Stability : -15°C to -25°C/1 year(Do not lower than -25°C)

Molecularweight : 50kD

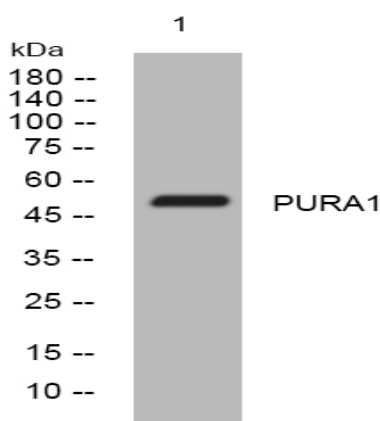
Background : This gene encodes a member of the adenylosuccinate synthase family of proteins. The encoded muscle-specific enzyme plays a role in the purine nucleotide cycle by catalyzing the first step in the conversion of inosine monophosphate (IMP) to adenosine monophosphate (AMP). Mutations in this gene may cause adolescent onset distal myopathy. Alternative splicing results in multiple transcript variants. [provided by RefSeq, Feb 2016],

Function : catalytic activity:GTP + IMP + L-aspartate = GDP + phosphate + N(6)-(1,2-dicarboxyethyl)-AMP.,cofactor:Binds 1 magnesium ion per subunit.,function:Plays an important role in the de novo pathway of purine nucleotide biosynthesis.,pathway:Purine metabolism; AMP biosynthesis via de novo pathway; AMP from IMP: step 1/2.,similarity:Belongs to the adenylosuccinate synthetase family.,subunit:Homodimer.,tissue specificity:Predominantly expressed in skeletal muscle and heart, as well as in several hematopoietic cell lines and solid tumors.,

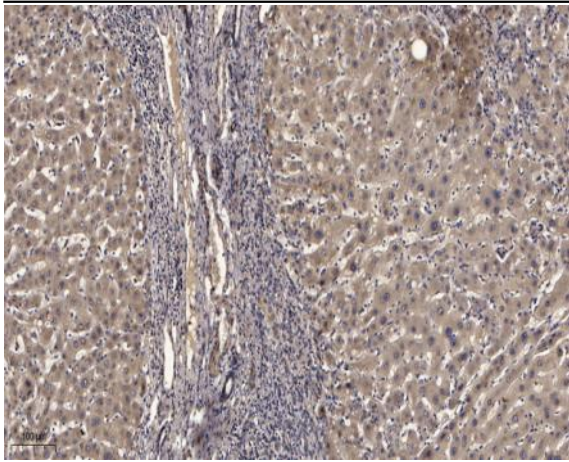
Subcellular Location : Cytoplasm .

Expression : Predominantly expressed in skeletal muscle and heart, as well as in several hematopoietic cell lines and solid tumors.

Products Images



Western blot analysis of lysates from VEC cells, primary antibody was diluted at 1:1000, 4° over night



Immunohistochemical analysis of paraffin-embedded human liver cancer. 1, Antibody was diluted at 1:200(4° overnight). 2, Tris-EDTA,pH9.0 was used for antigen retrieval. 3,Secondary antibody was diluted at 1:200(room temperature, 45min).