

CAR16 rabbit pAb

Catalog No :	YT6533
Reactivity :	Human
Applications :	WB
Target :	CAR16
Fields :	>>NOD-like receptor signaling pathway
Gene Name :	CARD16 COP COP1
Protein Name :	CAR16
Human Gene Id :	114769
Human Swiss Prot No :	Q5EG05
Immunogen :	Synthesized peptide derived from human CAR16 AA range: 101-151
Specificity :	This antibody detects endogenous levels of CAR16 at Human
Formulation :	Liquid in PBS containing 50% glycerol, 0.5% BSA and 0.02% sodium azide.
Source :	Polyclonal, Rabbit,IgG
Dilution :	WB 1[?]500-2000
Purification :	The antibody was affinity-purified from rabbit antiserum by affinity-chromatography using epitope-specific immunogen.
Concentration :	1 mg/ml
Storage Stability :	-15°C to -25°C/1 year(Do not lower than -25°C)
Molecularweight :	22kD

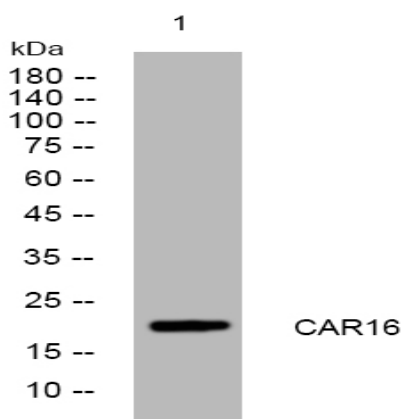
Function :

function:Caspase inhibitor. Acts as a regulator of procaspase-1/CASP1 activation implicated in the regulation of the proteolytic maturation of pro-interleukin-1 beta (IL1B) and its release during inflammation. Inhibits the release of IL1B in response to LPS in monocytes. Also induces NF-kappa-B activation during the pro-inflammatory cytokine response. Also able to inhibit CASP1-mediated neuronal cell death, TNF-alpha, hypoxia-, UV-, and staurosporine-mediated cell death but not ER stress-mediated cell death. Acts by preventing activation of caspases CASP1 and CASP4, possibly by preventing the interaction between CASP1 and RIPK2.,induction:Down-regulated in patients suffering of Huntington disease.,similarity:Contains 1 CARD domain.,subunit:Homooligomer. Interacts with CASP1, CASP4, CARD8 and RIPK2.,tissue specificity:Widely expressed. Expressed at higher level in placenta, spleen, lymph

Expression :

Widely expressed. Expressed at higher level in placenta, spleen, lymph node and bone marrow. Weakly or not expressed in thymus.

Products Images



Western blot analysis of lysates from Hela cells, primary antibody was diluted at 1:1000, 4 ° over night