

ATD3A rabbit pAb

Catalog No :	YT6532
Reactivity :	Human
Applications :	WB
Target :	ATD3A
Gene Name :	ATAD3A
Protein Name :	ATD3A
Human Gene Id :	55210
Human Swiss Prot No :	Q9NVI7
Immunogen :	Synthesized peptide derived from human ATD3A AA range: 433-483
Specificity :	This antibody detects endogenous levels of ATD3A at Human
Formulation :	Liquid in PBS containing 50% glycerol, 0.5% BSA and 0.02% sodium azide.
Source :	Polyclonal, Rabbit,IgG
Dilution :	WB 1[?]500-2000
Purification :	The antibody was affinity-purified from rabbit antiserum by affinity-chromatography using epitope-specific immunogen.
Concentration :	1 mg/ml
Storage Stability :	-15°C to -25°C/1 year(Do not lower than -25°C)
Molecularweight :	70kD
Background :	ATAD3A and ATAD3B (MIM 612317) are mitochondrial membrane proteins that contribute to the stabilization of large mitochondrial DNA (mtDNA)-protein complexes called nucleoids (He et al., 2007 [PubMed 17210950]).[supplied by

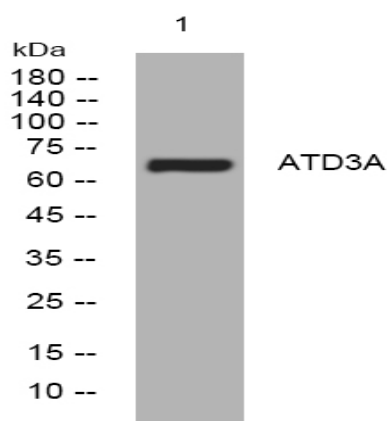
OMIM, Sep 2008],

Function : similarity:Belongs to the AAA ATPase family.,

Subcellular Location : Mitochondrion inner membrane ; Single-pass membrane protein . Mitochondrion matrix, mitochondrion nucleoid . In the mitochondrial inner membrane, enriched in sites with the potential to form contacts with the outer membrane (PubMed:20349121, PubMed:20154147). The N-terminal domain interacts with the inner surface of the mitochondrial outer membrane and the C-terminal domain localizes in a specific matrix compartment, where it is associated with nucleoids (PubMed:18063578). .

Expression : Overexpressed in lung adenocarcinomas (at protein level).

Products Images



Western blot analysis of lysates from HpeG2 cells, primary antibody was diluted at 1:1000, 4° over night