

## RINI rabbit pAb

<b>Catalog No :</b>	YT6528
<b>Reactivity :</b>	Human;Mouse;Rat
<b>Applications :</b>	WB;IHC
<b>Target :</b>	RINI
<b>Gene Name :</b>	RNH1 PRI RNH
<b>Protein Name :</b>	RINI
<b>Human Gene Id :</b>	6050
<b>Human Swiss Prot No :</b>	P13489
<b>Mouse Gene Id :</b>	107702
<b>Mouse Swiss Prot No :</b>	Q91VI7
<b>Rat Gene Id :</b>	100360501
<b>Rat Swiss Prot No :</b>	P29315
<b>Immunogen :</b>	Synthesized peptide derived from human RINI AA range: 273-323
<b>Specificity :</b>	This antibody detects endogenous levels of RINI at Human/Mouse/Rat
<b>Formulation :</b>	Liquid in PBS containing 50% glycerol, 0.5% BSA and 0.02% sodium azide.
<b>Source :</b>	Polyclonal, Rabbit,IgG
<b>Dilution :</b>	WB 1:500-2000;IHC 1:50-300
<b>Purification :</b>	The antibody was affinity-purified from rabbit antiserum by affinity-chromatography using epitope-specific immunogen.

**Concentration :** 1 mg/ml

**Storage Stability :** -15°C to -25°C/1 year(Do not lower than -25°C)

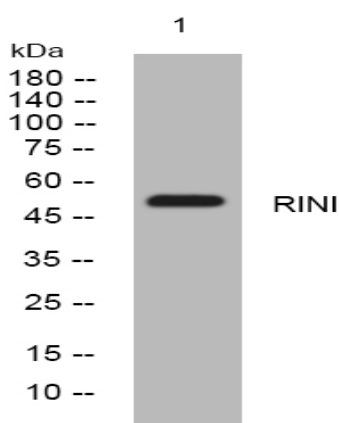
**Molecularweight :** 51kD

**Background :** Placental ribonuclease inhibitor (PRI) is a member of a family of proteinaceous cytoplasmic RNase inhibitors that occur in many tissues and bind to both intracellular and extracellular RNases (summarized by Lee et al., 1988 [PubMed 3219362]). In addition to control of intracellular RNases, the inhibitor may have a role in the regulation of angiogenin (MIM 105850). Ribonuclease inhibitor, of 50,000 Da, binds to ribonucleases and holds them in a latent form. Since neutral and alkaline ribonucleases probably play a critical role in the turnover of RNA in eukaryotic cells, RNH may be essential for control of mRNA turnover; the interaction of eukaryotic cells with ribonuclease may be reversible in vivo.[supplied by OMIM, Jul 2010],

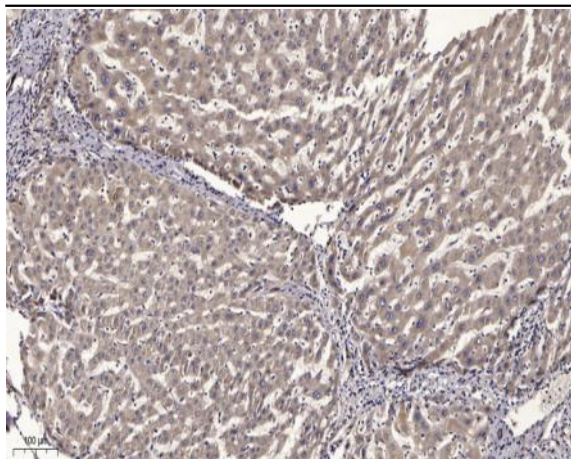
**Function :** function:Inhibitor of pancreatic RNase and angiogenin. May also function in the modulation of cellular activities.,PTM:At least 30 of the 32 cysteine residues are in the reduced form.,PTM:The N-terminus is blocked.,similarity:Contains 15 LRR (leucine-rich) repeats.,subunit:Forms a tight one-to-one complex with the RNase.,

**Subcellular Location :** Cytoplasm.

## Products Images



Western blot analysis of lysates from PC-12 cells, primary antibody was diluted at 1:1000, 4° over night



Immunohistochemical analysis of paraffin-embedded human liver cancer. 1, Antibody was diluted at 1:200(4° overnight). 2, Tris-EDTA,pH9.0 was used for antigen retrieval. 3,Secondary antibody was diluted at 1:200(room temperature, 45min).