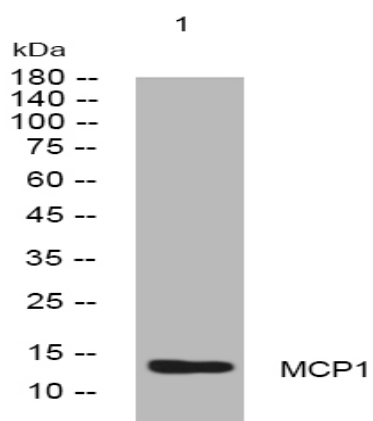


MCP1 rabbit pAb

| | |
|------------------------------|---|
| Catalog No : | YT6526 |
| Reactivity : | Human;Mouse; |
| Applications : | WB |
| Target : | MCP1 |
| Gene Name : | MCP1, SCYA2,CCL2 |
| Protein Name : | MCP1;Monocyte chemoattractant protein 1;Monocyte chemotactic protein 1;Monocyte secretory protein JE |
| Human Swiss Prot No : | P13500 |
| Mouse Gene Id : | P10148 |
| Immunogen : | Synthesized peptide derived from human MCP1. AA 50-64 |
| Specificity : | This antibody detects endogenous levels of MCP1 at Human |
| Formulation : | Liquid in PBS containing 50% glycerol, 0.5% BSA and 0.02% sodium azide. |
| Source : | Polyclonal, Rabbit,IgG |
| Dilution : | WB 1:500-2000 |
| Purification : | The antibody was affinity-purified from rabbit antiserum by affinity-chromatography using epitope-specific immunogen. |
| Concentration : | 1 mg/ml |
| Storage Stability : | -15°C to -25°C/1 year(Do not lower than -25°C) |
| Molecularweight : | 15kD |

Products Images



Western blot analysis of lysates from HeLa cells, primary antibody was diluted at 1:1000, 4° over night