

KISHB rabbit pAb

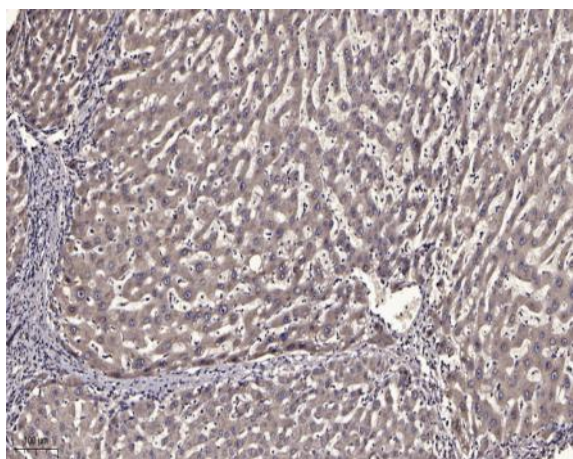
Catalog No :	YT6525
Reactivity :	Human;Mouse
Applications :	IHC;IF
Target :	KISHB
Gene Name :	TMEM167B C1orf119 AD-020
Protein Name :	KISHB
Human Gene Id :	56900
Human Swiss Prot No :	Q9NRX6
Mouse Gene Id :	67495
Mouse Swiss Prot No :	Q80X45
Immunogen :	Synthesized peptide derived from human KISHB AA range: 14-64
Specificity :	This antibody detects endogenous levels of KISHB at Human/Mouse
Formulation :	Liquid in PBS containing 50% glycerol, 0.5% BSA and 0.02% sodium azide.
Source :	Polyclonal, Rabbit,IgG
Dilution :	IHC 1:50-200. IF 1:50-200
Purification :	The antibody was affinity-purified from rabbit antiserum by affinity-chromatography using epitope-specific immunogen.
Concentration :	1 mg/ml
Storage Stability :	-15°C to -25°C/1 year(Do not lower than -25°C)

Molecularweight : 8kD

Function : caution:The sequence shown here is derived from an Ensembl automatic analysis pipeline and should be considered as preliminary data.,similarity:Belongs to the UPF0373 family.,

Subcellular Location : Golgi apparatus membrane ; Single-pass type I membrane protein .

Products Images



Immunohistochemical analysis of paraffin-embedded human liver cancer. 1, Antibody was diluted at 1:200(4° overnight). 2, Tris-EDTA,pH9.0 was used for antigen retrieval. 3,Secondary antibody was diluted at 1:200(room temperature, 45min).