

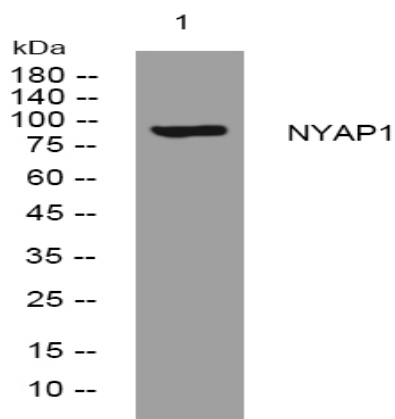
NYAP1 rabbit pAb

Catalog No :	YT6524
Reactivity :	Human;Mouse
Applications :	WB
Target :	NYAP1
Gene Name :	NYAP1 C7orf51
Protein Name :	NYAP1
Human Gene Id :	222950
Human Swiss Prot No :	Q6ZVC0
Mouse Gene Id :	243300
Mouse Swiss Prot No :	Q6PFX7
Immunogen :	Synthesized peptide derived from human NYAP1 AA range: 768-818
Specificity :	This antibody detects endogenous levels of NYAP1 at Human/Mouse
Formulation :	Liquid in PBS containing 50% glycerol, 0.5% BSA and 0.02% sodium azide.
Source :	Polyclonal, Rabbit,IgG
Dilution :	WB 1:500-2000
Purification :	The antibody was affinity-purified from rabbit antiserum by affinity-chromatography using epitope-specific immunogen.
Concentration :	1 mg/ml
Storage Stability :	-15°C to -25°C/1 year(Do not lower than -25°C)

Molecularweight : 93kD

Subcellular Location : intracellular,

Products Images



Western blot analysis of lysates from HEK293 cells, primary antibody was diluted at 1:1000, 4° over night