

HEAT6 rabbit pAb

Catalog No :	YT6519
Reactivity :	Human;Mouse;Rat
Applications :	WB
Target :	HEAT6
Gene Name :	HEATR6 ABC1
Protein Name :	HEAT6
Human Gene Id :	63897
Human Swiss Prot No :	Q6AI08
Mouse Gene Id :	217026
Mouse Swiss Prot No :	Q6P1G0
Rat Gene Id :	497972
Rat Swiss Prot No :	A1EC95
Immunogen :	Synthesized peptide derived from human HEAT6 AA range: 579-629
Specificity :	This antibody detects endogenous levels of HEAT6 at Human/Mouse/Rat
Formulation :	Liquid in PBS containing 50% glycerol, 0.5% BSA and 0.02% sodium azide.
Source :	Polyclonal, Rabbit,IgG
Dilution :	WB 1:500-2000
Purification :	The antibody was affinity-purified from rabbit antiserum by affinity-chromatography using epitope-specific immunogen.

Concentration : 1 mg/ml

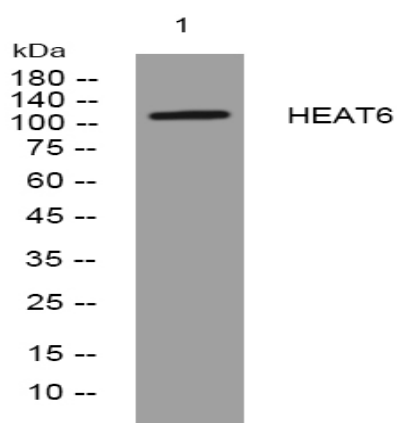
Storage Stability : -15°C to -25°C/1 year(Do not lower than -25°C)

Molecularweight : 130kD

Function : function:Amplification-dependent oncogene.,miscellaneous:17q23 region is one of the most commonly amplified regions in breast cancer and therefore may harbor genes important for breast cancer development and progression.,similarity:Contains 4 HEAT repeats.,tissue specificity:Amplified in breast cancer cell lines MCF7 and BT474.,

Expression : Amplified in breast cancer cell lines MCF-7 and BT-474.

Products Images



Western blot analysis of lysates from CACO2 cells, primary antibody was diluted at 1:1000, 4° over night