

CNDH2 rabbit pAb

Catalog No :	YT6517
Reactivity :	Human;Mouse;Rat
Applications :	WB
Target :	CNDH2
Gene Name :	NCAPH2 CAPH2
Protein Name :	CNDH2
Human Gene Id :	29781
Human Swiss Prot No :	Q6IBW4
Mouse Gene Id :	52683
Mouse Swiss Prot No :	Q8BSP2
Rat Gene Id :	300149
Rat Swiss Prot No :	Q4V8I2
Immunogen :	Synthesized peptide derived from human CNDH2 AA range: 501-551
Specificity :	This antibody detects endogenous levels of CNDH2 at Human/Mouse/Rat
Formulation :	Liquid in PBS containing 50% glycerol, 0.5% BSA and 0.02% sodium azide.
Source :	Polyclonal, Rabbit,IgG
Dilution :	WB 1:500-2000
Purification :	The antibody was affinity-purified from rabbit antiserum by affinity-chromatography using epitope-specific immunogen.

Concentration : 1 mg/ml

Storage Stability : -15°C to -25°C/1 year(Do not lower than -25°C)

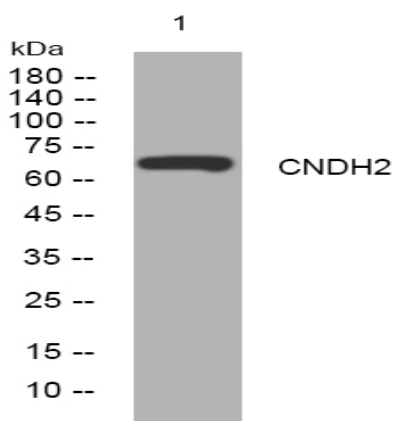
Molecularweight : 67kD

Background : This gene encodes one of the non-SMC subunits of the condensin II complex. This complex plays an essential role in mitotic chromosome assembly. Alternate splicing of this gene results in multiple transcript variants.[provided by RefSeq, May 2010],

Function : function:Regulatory subunit of the condensin-2 complex, a complex that seems to provide chromosomes with an additional level of organization and rigidity and in establishing mitotic chromosome architecture. May play a role in lineage-specific role in T-cell development.,PTM:Phosphorylated upon DNA damage, probably by ATM or ATR.,similarity:Belongs to the CND2 H2 (condensin-2 subunit 2) family.,subcellular location:Distributed along the arms of chromosomes assembled in vivo and in vitro.,subunit:Component of the condensin-2 complex, which contains the smc2 and smc4 heterodimer, and three non SMC subunits, ncaph2, ncaph2 and ncaph3 that probably regulate the complex.,

Subcellular Location : Nucleus . Chromosome . Distributed along the arms of chromosomes assembled in vivo and in vitro.

Products Images



Western blot analysis of lysates from HeLa cells, primary antibody was diluted at 1:1000, 4° over night