

SDHF1 rabbit pAb

Catalog No :	YT6511
Reactivity :	Human;Mouse;Rat
Applications :	WB;ELISA;IHC
Target :	SDHF1
Gene Name :	SDHAF1
Protein Name :	SDHF1
Human Gene Id :	644096
Human Swiss Prot No :	A6NFY7
Mouse Gene Id :	68332
Mouse Swiss Prot No :	Q3U276
Rat Gene Id :	100912030
Rat Swiss Prot No :	B0K036
Immunogen :	Synthesized peptide derived from human SDHF1 AA range: 9-59
Specificity :	This antibody detects endogenous levels of SDHF1 at Human/Mouse/Rat
Formulation :	Liquid in PBS containing 50% glycerol, 0.5% BSA and 0.02% sodium azide.
Source :	Polyclonal, Rabbit,IgG
Dilution :	WB 1:500-2000;IHC 1:50-300; ELISA 2000-20000
Purification :	The antibody was affinity-purified from rabbit antiserum by affinity-chromatography using epitope-specific immunogen.

Concentration : 1 mg/ml

Storage Stability : -15°C to -25°C/1 year(Do not lower than -25°C)

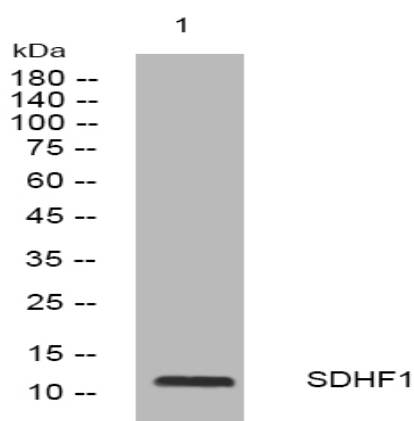
Molecularweight : 13kD

Background : The succinate dehydrogenase (SDH) complex (or complex II) of the mitochondrial respiratory chain is composed of 4 individual subunits. The protein encoded by this gene resides in the mitochondria, and is essential for SDH assembly, but does not physically associate with the complex in vivo. Mutations in this gene are associated with SDH-defective infantile leukoencephalopathy (mitochondrial complex II deficiency).[provided by RefSeq, Mar 2010],

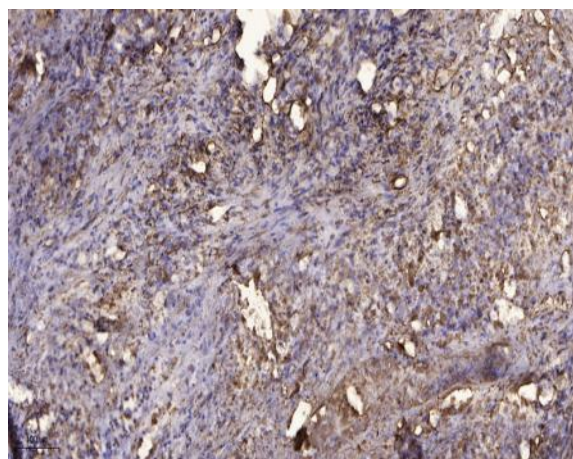
Subcellular Location : Mitochondrion matrix .

Expression : Ubiquitously expressed.

Products Images



Western blot analysis of lysates from PC-12 cells, primary antibody was diluted at 1:1000, 4° over night



Immunohistochemical analysis of paraffin-embedded human Squamous cell carcinoma of lung. 1, Antibody was diluted at 1:200(4° overnight). 2, Tris-EDTA,pH9.0 was used for antigen retrieval. 3,Secondary antibody was diluted at 1:200(room temperature, 45min).