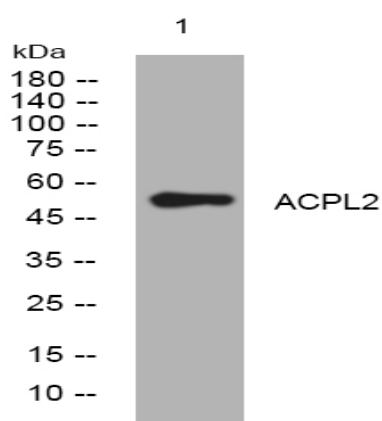


ACPL2 rabbit pAb

| | |
|------------------------------|---|
| Catalog No : | YT6509 |
| Reactivity : | Human;Mouse;Rat |
| Applications : | WB |
| Target : | ACPL2 |
| Gene Name : | ACPL2 UNQ370/PRO706 |
| Protein Name : | ACPL2 |
| Human Gene Id : | 92370 |
| Human Swiss Prot No : | Q8TE99 |
| Mouse Gene Id : | 235534 |
| Mouse Swiss Prot No : | Q8BHA9 |
| Rat Gene Id : | 315939 |
| Rat Swiss Prot No : | Q66H78 |
| Immunogen : | Synthesized peptide derived from human ACPL2 AA range: 201-251 |
| Specificity : | This antibody detects endogenous levels of ACPL2 at Human/Mouse/Rat |
| Formulation : | Liquid in PBS containing 50% glycerol, 0.5% BSA and 0.02% sodium azide. |
| Source : | Polyclonal, Rabbit,IgG |
| Dilution : | WB 1:500-2000 |
| Purification : | The antibody was affinity-purified from rabbit antiserum by affinity-chromatography using epitope-specific immunogen. |

| | |
|-------------------------------|--|
| Concentration : | 1 mg/ml |
| Storage Stability : | -15°C to -25°C/1 year(Do not lower than -25°C) |
| Molecularweight : | 53kD |
| Function : | catalytic activity:A phosphate monoester + H(2)O = an alcohol + phosphate.,similarity:Belongs to the histidine acid phosphatase family., |
| Subcellular Location : | Golgi apparatus membrane ; Single-pass type II membrane protein . Colocalizes to Golgi apparatus in a B3GAT3-dependent manner. . |
| Expression : | Widely expressed. Strongly expressed in spleen, fetal liver, moderately in placenta, pancreas, kidney, thymus and colon. |

Products Images



Western blot analysis of lysates from HpeG2 cells, primary antibody was diluted at 1:1000, 4° over night