

LRC3B rabbit pAb

Catalog No :	YT6501
Reactivity :	Human;Mouse
Applications :	WB;IHC
Target :	LRC3B
Gene Name :	LRRC3B LRP15 UNQ195/PRO221
Protein Name :	LRC3B
Human Gene Id :	116135
Human Swiss Prot No :	Q96PB8
Mouse Gene Id :	218763
Mouse Swiss Prot No :	Q8VCH9
Immunogen :	Synthesized peptide derived from human LRC3B AA range: 115-165
Specificity :	This antibody detects endogenous levels of LRC3B at Human/Mouse
Formulation :	Liquid in PBS containing 50% glycerol, 0.5% BSA and 0.02% sodium azide.
Source :	Polyclonal, Rabbit,IgG
Dilution :	WB 1:500-2000;IHC 1:50-300
Purification :	The antibody was affinity-purified from rabbit antiserum by affinity-chromatography using epitope-specific immunogen.
Concentration :	1 mg/ml
Storage Stability :	-15°C to -25°C/1 year(Do not lower than -25°C)

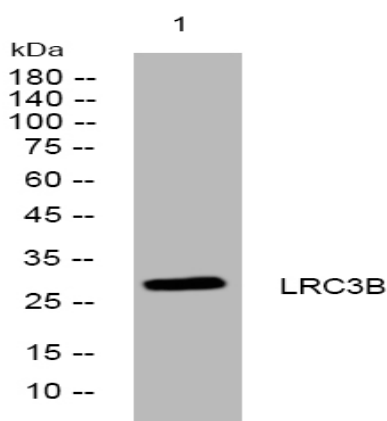
Molecularweight : 28kD

Background : The protein encoded by this gene is a tumor suppressor, with lowered expression levels found in gastric, renal, colorectal, lung, and breast cancer tissues. The promoter of this gene is frequently hypermethylated in these cancer tissues, although the hypermethylation does not appear to be the cause of the reduced expression of this gene. Several transcript variants encoding the same protein have been found for this gene. [provided by RefSeq, Dec 2015],

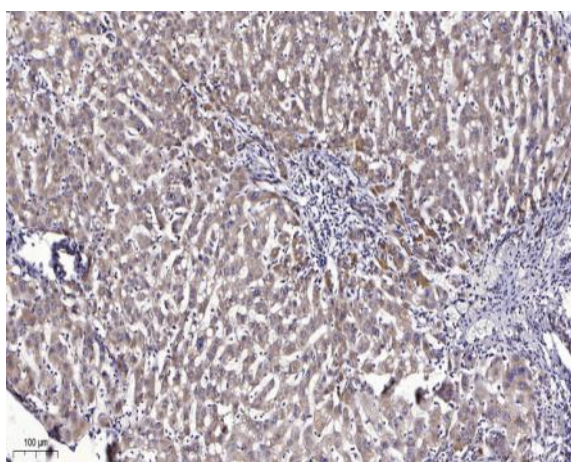
Function : similarity:Belongs to the LRRC3 family.,similarity:Contains 3 LRR (leucine-rich) repeats.,

Subcellular Location : Membrane ; Single-pass membrane protein .

Products Images



Western blot analysis of lysates from THP-1 cells, primary antibody was diluted at 1:1000, 4° over night



Immunohistochemical analysis of paraffin-embedded human liver cancer. 1, Antibody was diluted at 1:200(4° overnight). 2, Tris-EDTA,pH9.0 was used for antigen retrieval. 3,Secondary antibody was diluted at 1:200(room temperature, 45min).