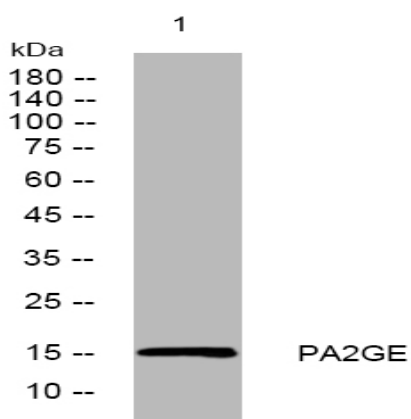


PA2GE rabbit pAb

Catalog No :	YT6499
Reactivity :	Human;Mouse
Applications :	WB
Target :	PA2GE
Fields :	>>Glycerophospholipid metabolism;>>Ether lipid metabolism;>>Arachidonic acid metabolism;>>Linoleic acid metabolism;>>alpha-Linolenic acid metabolism;>>Metabolic pathways;>>Ras signaling pathway;>>Vascular smooth muscle contraction;>>Pancreatic secretion;>>Fat digestion and absorption
Gene Name :	PLA2G2E
Protein Name :	PA2GE
Human Gene Id :	30814
Human Swiss Prot No :	Q9NZK7
Mouse Gene Id :	26970
Mouse Swiss Prot No :	Q9QUL3
Immunogen :	Synthesized peptide derived from human PA2GE AA range: 58-108
Specificity :	This antibody detects endogenous levels of PA2GE at Human/Mouse
Formulation :	Liquid in PBS containing 50% glycerol, 0.5% BSA and 0.02% sodium azide.
Source :	Polyclonal, Rabbit,IgG
Dilution :	WB 1:500-2000
Purification :	The antibody was affinity-purified from rabbit antiserum by affinity-chromatography using epitope-specific immunogen.

Concentration :	1 mg/ml
Storage Stability :	-15°C to -25°C/1 year(Do not lower than -25°C)
Molecularweight :	16kD
Function :	catalytic activity:Phosphatidylcholine + H(2)O = 1-acylglycerophosphocholine + a carboxylate.,cofactor:Binds 1 calcium ion per subunit.,function:PA2 catalyzes the calcium-dependent hydrolysis of the 2-acyl groups in 3-sn-phosphoglycerides. Has a preference for arachidonic-containing phospholipids.,similarity:Belongs to the phospholipase A2 family.,tissue specificity:Restricted to the brain, heart, lung, and placenta.,
Subcellular Location :	Secreted . Cytoplasm . Through binding to heparan sulfate proteoglycan, may be localized to cytoplasmic compartments enriched in anionic phospholipids. .
Expression :	Restricted to the brain, heart, lung, and placenta.

Products Images



Western blot analysis of lysates from SH-SY5Y cells, primary antibody was diluted at 1:1000, 4° over night