

## RNAS9 rabbit pAb

<b>Catalog No :</b>	YT6495
<b>Reactivity :</b>	Human;Mouse
<b>Applications :</b>	WB;ELISA;IHC
<b>Target :</b>	RNAS9
<b>Gene Name :</b>	RNASE9
<b>Protein Name :</b>	RNAS9
<b>Human Gene Id :</b>	390443
<b>Human Swiss Prot No :</b>	P60153
<b>Mouse Gene Id :</b>	328401
<b>Mouse Swiss Prot No :</b>	P60154
<b>Immunogen :</b>	Synthesized peptide derived from human RNAS9 AA range: 86-136
<b>Specificity :</b>	This antibody detects endogenous levels of RNAS9 at Human/Mouse
<b>Formulation :</b>	Liquid in PBS containing 50% glycerol, 0.5% BSA and 0.02% sodium azide.
<b>Source :</b>	Polyclonal, Rabbit,IgG
<b>Dilution :</b>	WB 1:500-2000;IHC 1:50-300; ELISA 2000-20000
<b>Purification :</b>	The antibody was affinity-purified from rabbit antiserum by affinity-chromatography using epitope-specific immunogen.
<b>Concentration :</b>	1 mg/ml
<b>Storage Stability :</b>	-15°C to -25°C/1 year(Do not lower than -25°C)

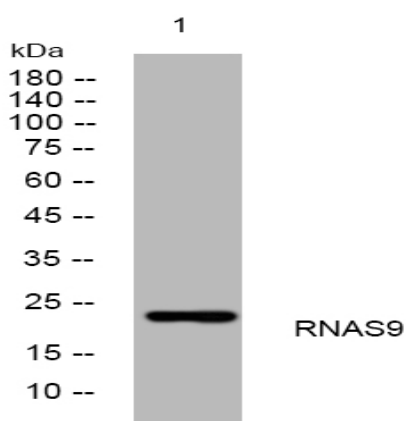
**Molecularweight :** 23kD

**Function :** similarity:Belongs to the pancreatic ribonuclease family.,

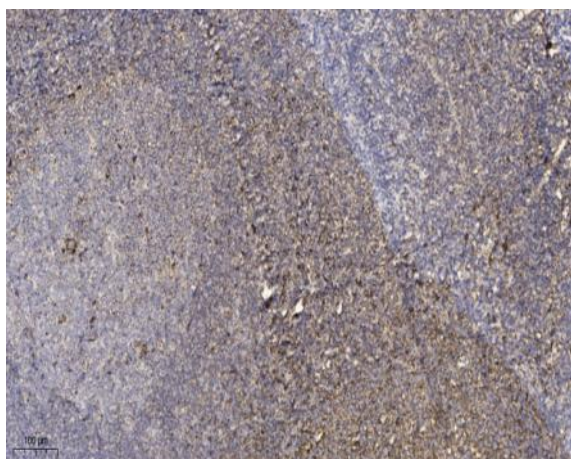
**Subcellular Location :** Secreted .

**Expression :** At the mRNA level, widely expressed (PubMed:18992174). At protein level, restricted to epididymis (PubMed:19137000). Expressed in spermatozoa (sperm head and neck), with higher levels on ejaculated and epididymal sperm than on testicular sperm (at protein level). Expressed in the epithelial cells of the epididymal tubule (at protein level). Not detected in muscle.

## Products Images



Western blot analysis of lysates from HpeG2 cells, primary antibody was diluted at 1:1000, 4° over night



Immunohistochemical analysis of paraffin-embedded human tonsil. 1, Antibody was diluted at 1:200(4° overnight). 2, Tris-EDTA,pH9.0 was used for antigen retrieval. 3,Secondary antibody was diluted at 1:200(room temperature, 45min).