

FBX41 rabbit pAb

Catalog No :	YT6494
Reactivity :	Human;Mouse
Applications :	WB
Target :	FBX41
Gene Name :	FBXO41 FBX41 KIAA1940
Protein Name :	FBX41
Human Gene Id :	150726
Human Swiss Prot No :	Q8TF61
Mouse Gene Id :	330369
Mouse Swiss Prot No :	Q6NS60
Immunogen :	Synthesized peptide derived from human FBX41 AA range: 622-672
Specificity :	This antibody detects endogenous levels of FBX41 at Human/Mouse
Formulation :	Liquid in PBS containing 50% glycerol, 0.5% BSA and 0.02% sodium azide.
Source :	Polyclonal, Rabbit,IgG
Dilution :	WB 1:500-2000
Purification :	The antibody was affinity-purified from rabbit antiserum by affinity-chromatography using epitope-specific immunogen.
Concentration :	1 mg/ml
Storage Stability :	-15°C to -25°C/1 year(Do not lower than -25°C)

Molecularweight : 96kD

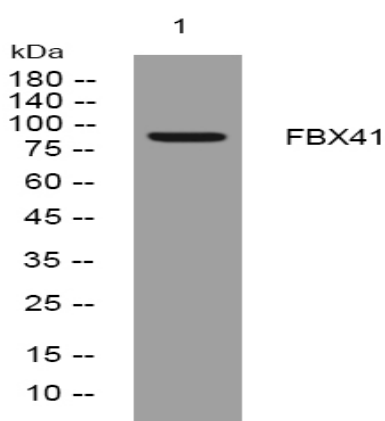
Background :

This gene encodes a member of the F-box protein family, which is characterized by an approximately 40 amino acid motif, the F-box. F-box proteins constitute one of the four subunits of the SCF ubiquitin protein ligase complex that plays a role in phosphorylation-dependent ubiquitination. F-box proteins are divided into three classes depending on the interaction substrate domain each contains in addition to the F-box motif: FBXW proteins contain WD-40 domains, FBXL proteins contain leucine-rich repeats, and FBXO proteins contain either different protein-protein interaction modules or no recognizable motifs. The protein encoded by this gene belongs to the FBXO class. [provided by RefSeq, Feb 2014],

Function :

function:Substrate-recognition component of the SCF (SKP1-CUL1-F-box protein)-type E3 ubiquitin ligase complex.,similarity:Contains 1 F-box domain.,subunit:Directly interacts with SKP1A and CUL1.,

Products Images



Western blot analysis of lysates from 293T cells, primary antibody was diluted at 1:1000, 4° over night