

GRPE1 rabbit pAb

Catalog No :	YT6493
Reactivity :	Human;Mouse;Rat
Applications :	WB
Target :	GRPE1
Gene Name :	GRPEL1 GREPEL1
Protein Name :	GRPE1
Human Gene Id :	80273
Human Swiss Prot No :	Q9HAV7
Mouse Gene Id :	17713
Mouse Swiss Prot No :	Q99LP6
Rat Gene Id :	79563
Rat Swiss Prot No :	P97576
Immunogen :	Synthesized peptide derived from human GRPE1 AA range: 159-209
Specificity :	This antibody detects endogenous levels of GRPE1 at Human/Mouse/Rat
Formulation :	Liquid in PBS containing 50% glycerol, 0.5% BSA and 0.02% sodium azide.
Source :	Polyclonal, Rabbit,IgG
Dilution :	WB 1:500-2000
Purification :	The antibody was affinity-purified from rabbit antiserum by affinity-chromatography using epitope-specific immunogen.

Concentration : 1 mg/ml

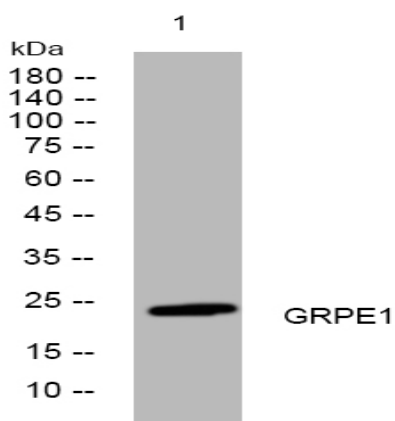
Storage Stability : -15°C to -25°C/1 year(Do not lower than -25°C)

Molecularweight : 24kD

Function : function:Essential component of the PAM complex, a complex required for the translocation of transit peptide-containing proteins from the inner membrane into the mitochondrial matrix in an ATP-dependent manner. Seems to control the nucleotide-dependent binding of mitochondrial HSP70 to substrate proteins.,similarity:Belongs to the grpE family.,subunit:Probable component of the PAM complex at least composed of a mitochondrial HSP70 protein, GRPEL1 or GRPEL2, TIMM44, TIMM16/MAGMAS and TIMM14/DNAJC19 (By similarity). Binds to HSP70, HSC70 and HSJ1B.,

Subcellular Location : Mitochondrion matrix .

Products Images



Western blot analysis of lysates from AD293 cells, primary antibody was diluted at 1:1000, 4° over night