

DEN2D rabbit pAb

Catalog No :	YT6492
Reactivity :	Human;Mouse
Applications :	WB
Target :	DEN2D
Gene Name :	DENND2D
Protein Name :	DEN2D
Human Gene Id :	79961
Human Swiss Prot No :	Q9H6A0
Mouse Gene Id :	72121
Mouse Swiss Prot No :	Q91VV4
Immunogen :	Synthesized peptide derived from human DEN2D AA range: 183-233
Specificity :	This antibody detects endogenous levels of DEN2D at Human/Mouse
Formulation :	Liquid in PBS containing 50% glycerol, 0.5% BSA and 0.02% sodium azide.
Source :	Polyclonal, Rabbit,IgG
Dilution :	WB 1:500-2000
Purification :	The antibody was affinity-purified from rabbit antiserum by affinity-chromatography using epitope-specific immunogen.
Concentration :	1 mg/ml
Storage Stability :	-15°C to -25°C/1 year(Do not lower than -25°C)

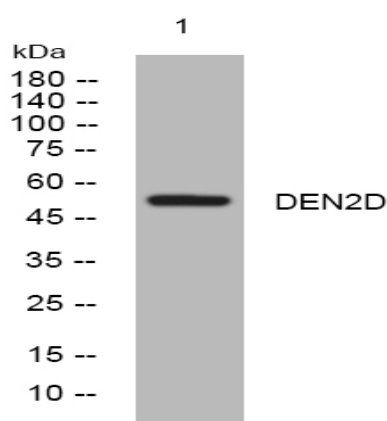
Molecularweight : 52kD

Function : similarity:Contains 1 dDENN domain.,similarity:Contains 1 DENN domain.,similarity:Contains 1 uDENN domain.,

Subcellular Location : Cytoplasm .

Expression : In bronchial mucosa, mainly expressed in ciliated and basal epithelial cells and weakly in alveolar cells (at protein level). Tends to be down-regulated in lung cancers, immortalized bronchial epithelial cell lines and precancerous lesions.

Products Images



Western blot analysis of lysates from HpeG2 cells, primary antibody was diluted at 1:1000, 4° over night