

TBCD1 rabbit pAb

Catalog No :	YT6484
Reactivity :	Human;Mouse
Applications :	WB
Target :	TBCD1
Fields :	>>AMPK signaling pathway
Gene Name :	TBC1D1 KIAA1108
Protein Name :	TBCD1
Human Gene Id :	23216
Human Swiss Prot No :	Q86TI0
Mouse Swiss Prot No :	Q60949
Immunogen :	Synthesized peptide derived from human TBCD1 AA range: 716-766
Specificity :	This antibody detects endogenous levels of TBCD1 at Human/Mouse
Formulation :	Liquid in PBS containing 50% glycerol, 0.5% BSA and 0.02% sodium azide.
Source :	Polyclonal, Rabbit,IgG
Dilution :	WB 1[?]500-2000
Purification :	The antibody was affinity-purified from rabbit antiserum by affinity-chromatography using epitope-specific immunogen.
Concentration :	1 mg/ml
Storage Stability :	-15°C to -25°C/1 year(Do not lower than -25°C)

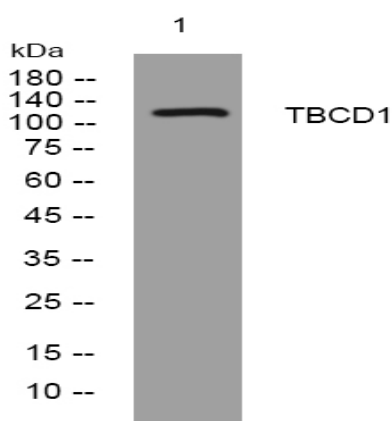
Molecularweight : 128kD

Background : TBC1D1 is the founding member of a family of proteins sharing a 180- to 200-amino acid TBC domain presumed to have a role in regulating cell growth and differentiation. These proteins share significant homology with TRE2 (USP6; MIM 604334), yeast Bub2, and CDC16 (MIM 603461) (White et al., 2000 [PubMed 10965142]).[supplied by OMIM, Mar 2008],

Function : function:May act as a GTPase-activating protein for Rab family protein(s). May play a role in the cell cycle and differentiation of various tissues.,similarity:Contains 1 PID domain.,similarity:Contains 1 Rab-GAP TBC domain.,

Subcellular Location : Nucleus .

Products Images



Western blot analysis of lysates from U2OS cells, primary antibody was diluted at 1:1000, 4° over night