

ZN142 rabbit pAb

Catalog No :	YT6474
Reactivity :	Human;Mouse
Applications :	WB
Target :	ZN142
Gene Name :	ZNF142 KIAA0236
Protein Name :	ZN142
Human Gene Id :	7701
Human Swiss Prot No :	P52746
Immunogen :	Synthesized peptide derived from human ZN142 AA range: 616-666
Specificity :	This antibody detects endogenous levels of ZN142 at Human
Formulation :	Liquid in PBS containing 50% glycerol, 0.5% BSA and 0.02% sodium azide.
Source :	Polyclonal, Rabbit,IgG
Dilution :	WB 1:500-2000
Purification :	The antibody was affinity-purified from rabbit antiserum by affinity-chromatography using epitope-specific immunogen.
Concentration :	1 mg/ml
Storage Stability :	-15°C to -25°C/1 year(Do not lower than -25°C)
Molecularweight :	186kD
Background :	The protein encoded by this gene belongs to the Kruppel family of C2H2-type zinc finger proteins. It contains 31 C2H2-type zinc fingers and may be involved in transcriptional regulation. Alternatively spliced transcript variants have been

found for this gene. [provided by RefSeq, Jan 2013],

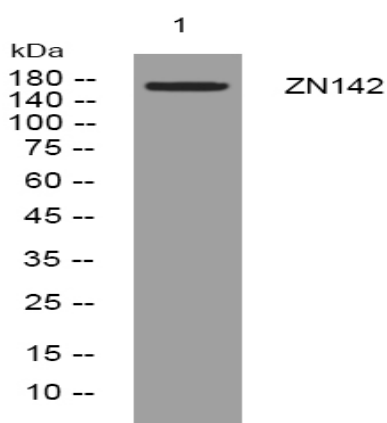
Function :

function:May be involved in transcriptional regulation.,similarity:Belongs to the krueppel C2H2-type zinc-finger protein family.,similarity:Contains 31 C2H2-type zinc fingers.,

Subcellular Location :

Nucleus .

Products Images



Western blot analysis of lysates from KB cells, primary antibody was diluted at 1:1000, 4 ° over night