

ADAT3 rabbit pAb

Catalog No :	YT6466
Reactivity :	Human;Mouse;Rat
Applications :	WB
Target :	ADAT3
Gene Name :	ADAT3
Protein Name :	ADAT3
Human Gene Id :	113179
Human Swiss Prot No :	Q96EY9
Mouse Gene Id :	100113398
Mouse Swiss Prot No :	Q6PAT0
Rat Gene Id :	100125374
Rat Swiss Prot No :	Q561R2
Immunogen :	Synthesized peptide derived from human ADAT3 AA range: 295-345
Specificity :	This antibody detects endogenous levels of ADAT3 at Human/Mouse/Rat
Formulation :	Liquid in PBS containing 50% glycerol, 0.5% BSA and 0.02% sodium azide.
Source :	Polyclonal, Rabbit,IgG
Dilution :	WB 1:500-2000
Purification :	The antibody was affinity-purified from rabbit antiserum by affinity-chromatography using epitope-specific immunogen.

Concentration : 1 mg/ml

Storage Stability : -15°C to -25°C/1 year(Do not lower than -25°C)

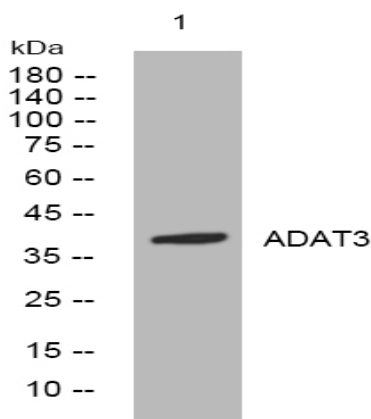
Molecularweight : 39kD

Background : This gene encodes a subunit of a tRNA-specific adenosine deaminase. This heterodimeric enzyme converts adenosine to inosine in the tRNA anticodon. A mutation in this gene causes a syndrome characterized by intellectual disability and strabismus. This gene shares its 5' exon with the overlapping gene, secretory carrier membrane protein 4 (Gene ID: 113178). [provided by RefSeq, Jul 2016],

Function : caution:Val-225 is present instead of the conserved Glu which is an active site in the cytidine and deoxycytidylate deaminase family of enzymes. It is suggested that this protein may act as a regulatory subunit.,cofactor:Zinc.,function:May be involved in deamination of adenosine-34 to inosine in many tRNAs as a regulatory subunit .,PTM:Phosphorylated upon DNA damage, probably by ATM or ATR.,similarity:Belongs to the cytidine and deoxycytidylate deaminase family. ADAT3 subfamily.,

Subcellular Location : nucleoplasm,cytosol,

Products Images



Western blot analysis of lysates from HeLa cells, primary antibody was diluted at 1:1000, 4° over night