

## IGS21 rabbit pAb

<b>Catalog No :</b>	YT6465
<b>Reactivity :</b>	Human;Mouse
<b>Applications :</b>	WB
<b>Target :</b>	IGS21
<b>Gene Name :</b>	IGSF21
<b>Protein Name :</b>	IGS21
<b>Human Gene Id :</b>	84966
<b>Human Swiss Prot No :</b>	Q96ID5
<b>Mouse Gene Id :</b>	230868
<b>Mouse Swiss Prot No :</b>	Q7TNR6
<b>Immunogen :</b>	Synthesized peptide derived from human IGS21 AA range: 289-339
<b>Specificity :</b>	This antibody detects endogenous levels of IGS21 at Human/Mouse
<b>Formulation :</b>	Liquid in PBS containing 50% glycerol, 0.5% BSA and 0.02% sodium azide.
<b>Source :</b>	Polyclonal, Rabbit,IgG
<b>Dilution :</b>	WB 1:500-2000
<b>Purification :</b>	The antibody was affinity-purified from rabbit antiserum by affinity-chromatography using epitope-specific immunogen.
<b>Concentration :</b>	1 mg/ml
<b>Storage Stability :</b>	-15°C to -25°C/1 year(Do not lower than -25°C)

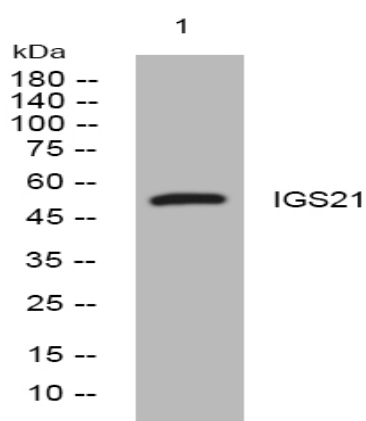
**Molecularweight :** 51kD

**Background :** This gene encodes a protein which has two immunoglobulin (Ig) domains and is a member of the immunoglobulin superfamily. Proteins in this superfamily are usually found on or in cell membranes and act as receptors in immune response pathways. [provided by RefSeq, Sep 2011],

**Function :** similarity:Contains 2 Ig-like (immunoglobulin-like) domains.,

**Subcellular Location :** Cell junction, synapse, postsynaptic cell membrane ; Lipid-anchor, GPI-anchor .

## Products Images



Western blot analysis of lysates from DU145 cells, primary antibody was diluted at 1:1000, 4° over night