

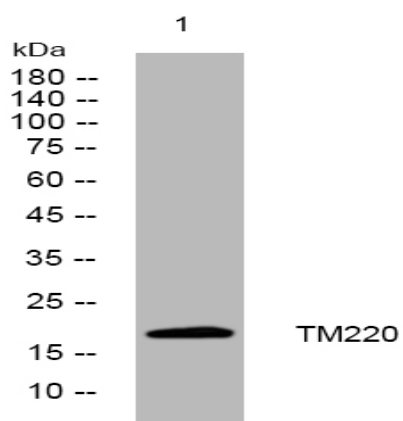
TM220 rabbit pAb

Catalog No :	YT6461
Reactivity :	Human;Mouse
Applications :	WB
Target :	TM220
Gene Name :	TMEM220
Protein Name :	TM220
Human Gene Id :	388335
Human Swiss Prot No :	Q6QAJ8
Mouse Gene Id :	338369
Mouse Swiss Prot No :	Q8BP07
Immunogen :	Synthesized peptide derived from human TM220 AA range: 51-101
Specificity :	This antibody detects endogenous levels of TM220 at Human/Mouse
Formulation :	Liquid in PBS containing 50% glycerol, 0.5% BSA and 0.02% sodium azide.
Source :	Polyclonal, Rabbit,IgG
Dilution :	WB 1:500-2000
Purification :	The antibody was affinity-purified from rabbit antiserum by affinity-chromatography using epitope-specific immunogen.
Concentration :	1 mg/ml
Storage Stability :	-15°C to -25°C/1 year(Do not lower than -25°C)

Molecularweight : 18kD

Subcellular Location : Membrane ; Multi-pass membrane protein .

Products Images



Western blot analysis of lysates from KB cells, primary antibody was diluted at 1:1000, 4 ° over night