

## CH082 rabbit pAb

|                              |   |
|------------------------------|---|
| <b>Catalog No :</b>          | YT6445  |
| <b>Reactivity :</b>          | Human;Mouse;Rat   |
| <b>Applications :</b>        | WB  |
| <b>Target :</b>              | CH082   |
| <b>Gene Name :</b>           | C8orf82   |
| <b>Protein Name :</b>        | CH082   |
| <b>Human Gene Id :</b>       | 414919  |
| <b>Human Swiss Prot No :</b> | Q6P1X6  |
| <b>Mouse Gene Id :</b>       | 223665  |
| <b>Mouse Swiss Prot No :</b> | Q8VE95  |
| <b>Rat Gene Id :</b>         | 362946  |
| <b>Rat Swiss Prot No :</b>   | Q642A4  |
| <b>Immunogen :</b>           | Synthesized peptide derived from human CH082 AA range: 163-213  |
| <b>Specificity :</b>         | This antibody detects endogenous levels of CH082 at Human/Mouse/Rat   |
| <b>Formulation :</b>         | Liquid in PBS containing 50% glycerol, 0.5% BSA and 0.02% sodium azide.   |
| <b>Source :</b>              | Polyclonal, Rabbit,IgG  |
| <b>Dilution :</b>            | WB 1:500-2000   |
| <b>Purification :</b>        | The antibody was affinity-purified from rabbit antiserum by affinity-chromatography using epitope-specific immunogen. |

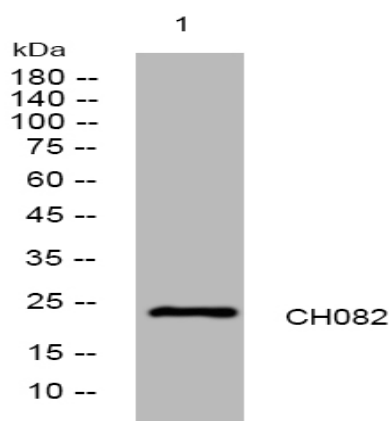
**Concentration :** 1 mg/ml

**Storage Stability :** -15°C to -25°C/1 year(Do not lower than -25°C)

**Molecularweight :** 24kD

**Function :** similarity:Belongs to the UPF0598 family.,

## Products Images



Western blot analysis of lysates from Jurkat cells, primary antibody was diluted at 1:1000, 4° over night