

## PPR3E rabbit pAb

<b>Catalog No :</b>	YT6439
<b>Reactivity :</b>	Human;Mouse;Rat
<b>Applications :</b>	WB
<b>Target :</b>	PPR3E
<b>Fields :</b>	>>Insulin signaling pathway;>>Insulin resistance
<b>Gene Name :</b>	PPP1R3E
<b>Protein Name :</b>	PPR3E
<b>Human Swiss Prot No :</b>	Q9H7J1
<b>Mouse Swiss Prot No :</b>	Q8BRJ4
<b>Rat Swiss Prot No :</b>	P0C7L8
<b>Immunogen :</b>	Synthesized peptide derived from human PPR3E AA range: 210-260
<b>Specificity :</b>	This antibody detects endogenous levels of PPR3E at Human/Mouse/Rat
<b>Formulation :</b>	Liquid in PBS containing 50% glycerol, 0.5% BSA and 0.02% sodium azide.
<b>Source :</b>	Polyclonal, Rabbit,IgG
<b>Dilution :</b>	WB 1[?]500-2000
<b>Purification :</b>	The antibody was affinity-purified from rabbit antiserum by affinity-chromatography using epitope-specific immunogen.
<b>Concentration :</b>	1 mg/ml
<b>Storage Stability :</b>	-15°C to -25°C/1 year(Do not lower than -25°C)

**Molecularweight :** 31kD

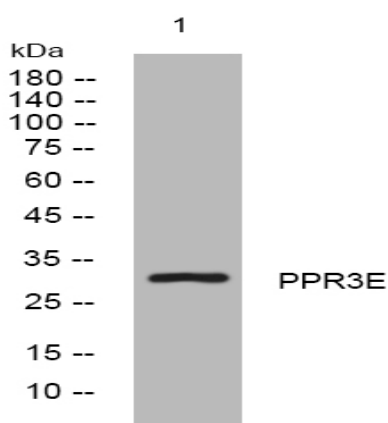
**Function :**

domain:The CBM21 domain is known to be involved in the localization to glycogen and is characteristic of some regulatory subunit of phosphatase complexes.,function:Acts as a glycogen-targeting subunit for PP1. PP1 is involved in glycogen metabolism and contributes to the activation of glycogen synthase leading to an increase in glycogen synthesis.,similarity:Contains 1 CBM21 (carbohydrate binding type-21) domain.,tissue specificity:Expressed in skeletal muscle and heart with barely detectable levels in liver.,

**Expression :**

Expressed in skeletal muscle and heart with barely detectable levels in liver.

## Products Images



Western blot analysis of lysates from 293T cells, primary antibody was diluted at 1:1000, 4° over night