

SAMD5 rabbit pAb

Catalog No :	YT6438
Reactivity :	Human;Mouse
Applications :	WB
Target :	SAMD5
Gene Name :	SAMD5 SAMDC1
Protein Name :	SAMD5
Human Gene Id :	389432
Human Swiss Prot No :	Q5TGI4
Mouse Gene Id :	320825
Mouse Swiss Prot No :	Q3V1H9
Immunogen :	Synthesized peptide derived from human SAMD5 AA range: 66-116
Specificity :	This antibody detects endogenous levels of SAMD5 at Human/Mouse
Formulation :	Liquid in PBS containing 50% glycerol, 0.5% BSA and 0.02% sodium azide.
Source :	Polyclonal, Rabbit,IgG
Dilution :	WB 1[?]500-2000
Purification :	The antibody was affinity-purified from rabbit antiserum by affinity-chromatography using epitope-specific immunogen.
Concentration :	1 mg/ml
Storage Stability :	-15°C to -25°C/1 year(Do not lower than -25°C)

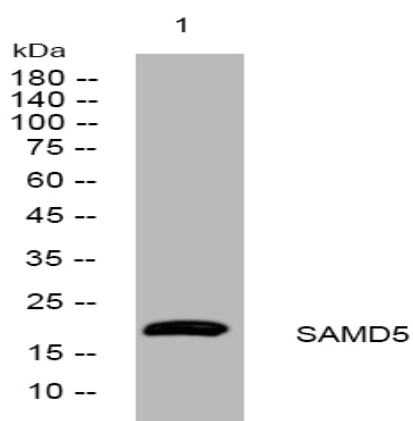
Molecularweight : 19kD

Function : similarity:Contains 1 SAM (sterile alpha motif) domain.,

Subcellular Location : Cytoplasm .

Expression : Detected in biliary epithelial cells on bile ducts at the hepatic hilum (at protein level).

Products Images



Western blot analysis of lysates from VEC cells, primary antibody was diluted at 1:1000, 4° over night