

ZN195 rabbit pAb

Catalog No :	YT6433
Reactivity :	Human
Applications :	WB
Target :	ZN195
Fields :	>>Herpes simplex virus 1 infection
Gene Name :	ZNF195 ZNFP104
Protein Name :	ZN195
Human Gene Id :	7748
Human Swiss Prot No :	O14628
Immunogen :	Synthesized peptide derived from human ZN195 AA range: 262-312
Specificity :	This antibody detects endogenous levels of ZN195 at Human
Formulation :	Liquid in PBS containing 50% glycerol, 0.5% BSA and 0.02% sodium azide.
Source :	Polyclonal, Rabbit,IgG
Dilution :	WB 1:500-2000
Purification :	The antibody was affinity-purified from rabbit antiserum by affinity-chromatography using epitope-specific immunogen.
Concentration :	1 mg/ml
Storage Stability :	-15°C to -25°C/1 year(Do not lower than -25°C)
Molecularweight :	69kD

Background :

This gene encodes a protein belonging to the Krueppel C2H2-type zinc-finger protein family. These family members are transcription factors that are implicated in a variety of cellular processes. This gene is located near the centromeric border of chromosome 11p15.5, next to an imprinted domain that is associated with maternal-specific loss of heterozygosity in Wilms's tumors. Alternative splicing results in multiple transcript variants. [provided by RefSeq, Feb 2012],

Function :

function:May be involved in transcriptional regulation.,similarity:Belongs to the krueppel C2H2-type zinc-finger protein family.,similarity:Contains 1 KRAB domain.,similarity:Contains 10 C2H2-type zinc fingers.,tissue specificity:Expressed in adult heart, brain, placenta, skeletal muscle and pancreas, and in fetal lung, kidney and brain. There is little expression in adult lung, liver and kidney.,

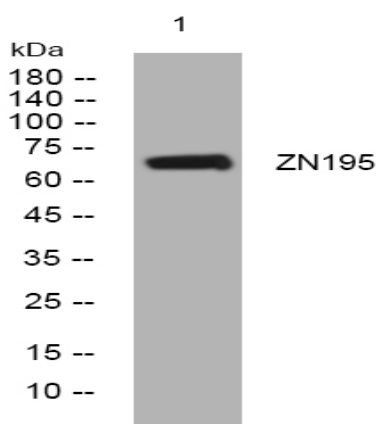
Subcellular Location :

Nucleus .

Expression :

Expressed in adult heart, brain, placenta, skeletal muscle and pancreas, and in fetal lung, kidney and brain. There is little expression in adult lung, liver and kidney.

Products Images



Western blot analysis of lysates from THP-1 cells, primary antibody was diluted at 1:1000, 4° over night