

CCHCR rabbit pAb

Catalog No :	YT6430
Reactivity :	Human;Mouse
Applications :	WB
Target :	CCHCR
Gene Name :	CCHCR1 C6orf18 HCR
Protein Name :	CCHCR
Human Gene Id :	54535
Human Swiss Prot No :	Q8TD31
Mouse Gene Id :	240084
Mouse Swiss Prot No :	Q8K2I2
Immunogen :	Synthesized peptide derived from human CCHCR AA range: 180-230
Specificity :	This antibody detects endogenous levels of CCHCR at Human/Mouse
Formulation :	Liquid in PBS containing 50% glycerol, 0.5% BSA and 0.02% sodium azide.
Source :	Polyclonal, Rabbit,IgG
Dilution :	WB 1:500-2000
Purification :	The antibody was affinity-purified from rabbit antiserum by affinity-chromatography using epitope-specific immunogen.
Concentration :	1 mg/ml
Storage Stability :	-15°C to -25°C/1 year(Do not lower than -25°C)

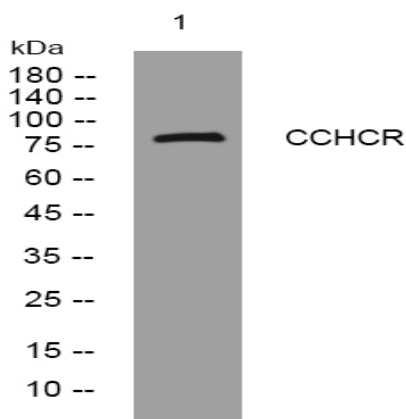
Molecularweight : 86kD

Function : function:May be a regulator of keratinocyte proliferation or differentiation.,polymorphism:HCR*WWCC is associated with susceptibility to psoriasis. Psoriasis is a chronic inflammatory dermatosis that affects approximately 2% of the population. It is a multifactorial disease characterized by red, scaly skin lesions that are usually found on the scalp, elbows, and knees, and may be associated with severe arthritis. The lesions are caused by hyperproliferative keratinocytes and infiltration of inflammatory cells into the dermis and epidermis. The usual age of onset of psoriasis is between 15 and 30 years, although it can present at any age. Association of HCR with psoriasis seem to be due to linkage disequilibrium with CW*0602 (PubMed:11348465). HCR is unlikely to be directly involved in psoriasis development.,tissue specificity:Found in all tissues tested, abundantly expressed in heart, li

Subcellular Location : Cytoplasm. Nucleus.

Expression : Found in all tissues tested, abundantly expressed in heart, liver, skeletal muscle, kidney and pancreas, and to a lesser extent in lung and placenta. Overexpressed in keratinocytes of psoriatic lesions.

Products Images



Western blot analysis of lysates from K562 cells, primary antibody was diluted at 1:1000, 4° over night