

EVX2 rabbit pAb

Catalog No :	YT6428
Reactivity :	Human;Mouse
Applications :	WB
Target :	EVX2
Gene Name :	EVX2
Protein Name :	EVX2
Human Gene Id :	344191
Human Swiss Prot No :	Q03828
Mouse Gene Id :	14029
Mouse Swiss Prot No :	P49749
Immunogen :	Synthesized peptide derived from human EVX2 AA range: 138-188
Specificity :	This antibody detects endogenous levels of EVX2 at Human/Mouse
Formulation :	Liquid in PBS containing 50% glycerol, 0.5% BSA and 0.02% sodium azide.
Source :	Polyclonal, Rabbit,IgG
Dilution :	WB 1:500-2000
Purification :	The antibody was affinity-purified from rabbit antiserum by affinity-chromatography using epitope-specific immunogen.
Concentration :	1 mg/ml
Storage Stability :	-15°C to -25°C/1 year(Do not lower than -25°C)

Molecularweight : 52kD

Background :

This gene is located at the 5' end of the HOXD gene cluster on chromosome 2. The encoded protein is a homeobox transcription factor that is related to the protein encoded by the Drosophila even-skipped (eve) gene, a member of the pair-rule class of segmentation genes. A 117 kb microdeletion at the 5' end of the HOXD gene cluster, which includes this gene and the HOXD9-HOXD13 genes, causes synpolydactyly, a dominantly inherited disease resulting in limb malformation. [provided by RefSeq, Sep 2009],

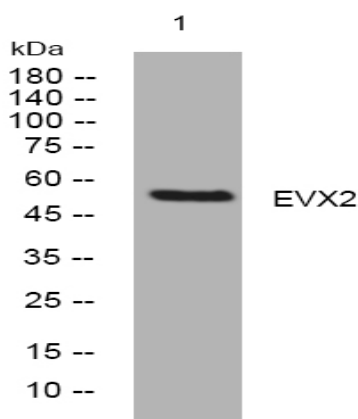
Function :

developmental stage:Expressed during early embryogenesis and neurogenesis in a biphasic manner.,similarity:Belongs to the even-skipped homeobox family.,similarity:Contains 1 homeobox DNA-binding domain.,

Subcellular Location :

Nucleus.

Products Images



Western blot analysis of lysates from MCF-7 cells, primary antibody was diluted at 1:1000, 4° over night