

FCGBP rabbit pAb

Catalog No :	YT6422
Reactivity :	Human
Applications :	IHC;IF
Target :	FCGBP
Gene Name :	FCGBP
Protein Name :	FCGBP
Human Gene Id :	8857
Human Swiss Prot No :	Q9Y6R7
Immunogen :	Synthesized peptide derived from human FCGBP AA range: 1806-1856
Specificity :	This antibody detects endogenous levels of FCGBP at Human
Formulation :	Liquid in PBS containing 50% glycerol, 0.5% BSA and 0.02% sodium azide.
Source :	Polyclonal, Rabbit,IgG
Dilution :	IHC 1:50-200. IF 1:50-200
Purification :	The antibody was affinity-purified from rabbit antiserum by affinity-chromatography using epitope-specific immunogen.
Concentration :	1 mg/ml
Storage Stability :	-15°C to -25°C/1 year(Do not lower than -25°C)
Molecularweight :	595kD
Function :	domain:The N-terminal IgGFc-binding region is primate-specific.,function:May be involved in the maintenance of the mucosal structure as a gel-like component of the mucosa.,similarity:Contains 12 TIL (trypsin inhibitory-like)

domains.,similarity:Contains 13 VWFD domains.,subunit:Interacts with the Fc portion of IgG and with MUC2.,tissue specificity:Mainly expressed in placenta and colon epithelium. Expressed in thyroid, and down-regulated in thyroid carcinomas. Present in serum, with higher levels in patients with various autoimmune diseases (at protein level).,

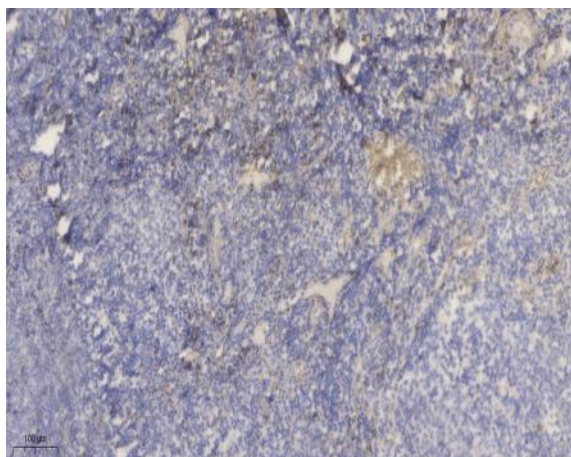
Subcellular Location :

Secreted .

Expression :

Mainly expressed in placenta and colon epithelium. Expressed in thyroid, and down-regulated in thyroid carcinomas. Present in serum, with higher levels in patients with various autoimmune diseases (at protein level).

Products Images



Immunohistochemical analysis of paraffin-embedded human tonsil. 1, Antibody was diluted at 1:200(4° overnight). 2, Tris-EDTA,pH9.0 was used for antigen retrieval. 3,Secondary antibody was diluted at 1:200(room temperature, 30min).