

LRC26 rabbit pAb

Catalog No :	YT6420
Reactivity :	Human;Mouse;Rat
Applications :	WB;IHC
Target :	LRC26
Gene Name :	LRRRC26 CAPC
Protein Name :	LRC26
Human Gene Id :	389816
Human Swiss Prot No :	Q2I0M4
Mouse Gene Id :	227618
Mouse Swiss Prot No :	Q91W20
Rat Gene Id :	311803
Rat Swiss Prot No :	Q6P7C4
Immunogen :	Synthesized peptide derived from human LRC26 AA range: 163-213
Specificity :	This antibody detects endogenous levels of LRC26 at Human/Mouse/Rat
Formulation :	Liquid in PBS containing 50% glycerol, 0.5% BSA and 0.02% sodium azide.
Source :	Polyclonal, Rabbit,IgG
Dilution :	WB 1:500-2000;IHC 1:50-300
Purification :	The antibody was affinity-purified from rabbit antiserum by affinity-chromatography using epitope-specific immunogen.

Concentration : 1 mg/ml

Storage Stability : -15°C to -25°C/1 year(Do not lower than -25°C)

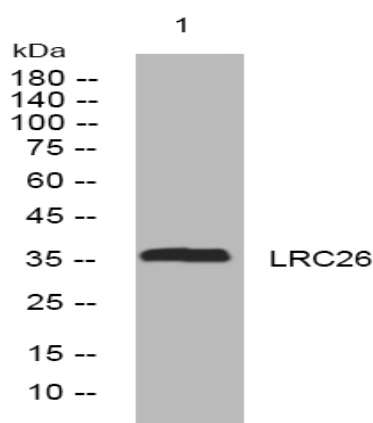
Molecularweight : 37kD

Function : similarity:Contains 6 LRR (leucine-rich) repeats.,subcellular location:Although predicted to be a single-pass type I membrane protein, this protein localizes to the cytoplasm when expressed at high levels (PubMed:15164053).,tissue specificity:Expressed highly in normal prostate and salivary gland, very weakly in colon, pancreas, and intestine, and not at all in other tissues. Expressed highly in many cancer cell lines and in breast cancer, pancreatic cancer and colon cancer.,

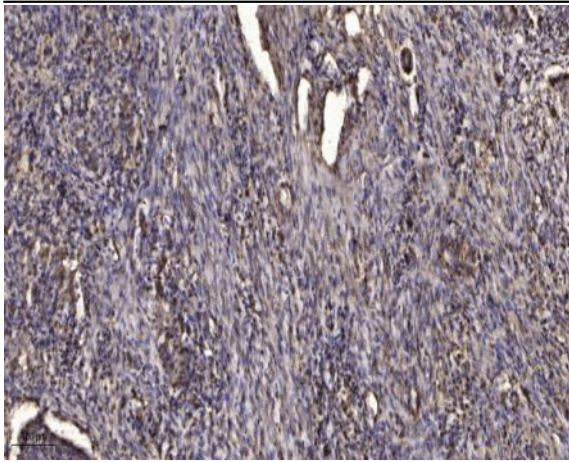
Subcellular Location : Cell membrane; Single-pass type I membrane protein. Cytoplasm, cytoskeleton. Localizes to the cytoplasm when expressed at high levels. .

Expression : Isoform 1 is expressed highly in normal prostate and salivary gland, very weakly in colon, pancreas, and intestine, and not at all in other tissues. Isoform 1 is expressed highly in many cancer cell lines and in breast cancer, pancreatic cancer and colon cancer. Isoform 2 is expressed in cancer cell lines.

Products Images



Western blot analysis of lysates from SH-SY5Y cells, primary antibody was diluted at 1:1000, 4° over night



Immunohistochemical analysis of paraffin-embedded human Squamous cell carcinoma of lung. 1, Antibody was diluted at 1:200(4° overnight). 2, Tris-EDTA,pH9.0 was used for antigen retrieval. 3,Secondary antibody was diluted at 1:200(room temperature, 45min).