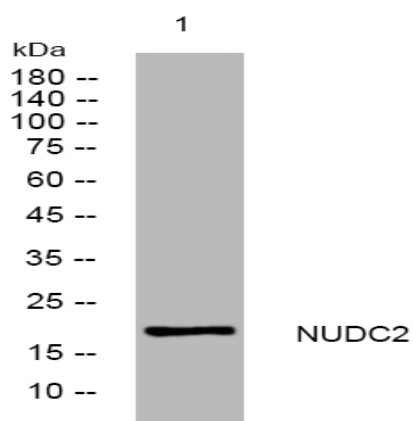


NUDC2 rabbit pAb

Catalog No :	YT6418
Reactivity :	Human;Mouse;Rat
Applications :	WB
Target :	NUDC2
Gene Name :	NUDCD2
Protein Name :	NUDC2
Human Gene Id :	134492
Human Swiss Prot No :	Q8WVJ2
Mouse Gene Id :	52653
Mouse Swiss Prot No :	Q9CQ48
Rat Gene Id :	287199
Rat Swiss Prot No :	Q5M823
Immunogen :	Synthesized peptide derived from human NUDC2 AA range: 90-140
Specificity :	This antibody detects endogenous levels of NUDC2 at Human/Mouse/Rat
Formulation :	Liquid in PBS containing 50% glycerol, 0.5% BSA and 0.02% sodium azide.
Source :	Polyclonal, Rabbit,IgG
Dilution :	WB 1:500-2000
Purification :	The antibody was affinity-purified from rabbit antiserum by affinity-chromatography using epitope-specific immunogen.

Concentration :	<u>1 mg/ml</u>
Storage Stability :	<u>-15°C to -25°C/1 year(Do not lower than -25°C)</u>
Molecularweight :	<u>17kD</u>
Function :	<u>similarity:Contains 1 CS domain.,</u>
Subcellular Location :	<u>Chromosome, centromere, kinetochore . Cytoplasm, cytoskeleton, microtubule organizing center, centrosome . Cytoplasm, cytoskeleton, spindle pole . Associates with centrosomes in interphase and to spindle poles and kinetochores during mitosis.</u>

Products Images



Western blot analysis of lysates from AD293 cells, primary antibody was diluted at 1:1000, 4° over night