

OSBL8 rabbit pAb

Catalog No :	YT6409
Reactivity :	Human;Mouse
Applications :	WB
Target :	OSBL8
Gene Name :	OSBPL8 KIAA1451 ORP8 OSBP10
Protein Name :	OSBL8
Human Gene Id :	114882
Human Swiss Prot No :	Q9BZF1
Immunogen :	Synthesized peptide derived from human OSBL8 AA range: 290-340
Specificity :	This antibody detects endogenous levels of OSBL8 at Human
Formulation :	Liquid in PBS containing 50% glycerol, 0.5% BSA and 0.02% sodium azide.
Source :	Polyclonal, Rabbit,IgG
Dilution :	WB 1[?]500-2000
Purification :	The antibody was affinity-purified from rabbit antiserum by affinity-chromatography using epitope-specific immunogen.
Concentration :	1 mg/ml
Storage Stability :	-15°C to -25°C/1 year(Do not lower than -25°C)
Molecularweight :	98kD
Background :	This gene encodes a member of a family of proteins containing an N-terminal pleckstrin homology domain and a highly conserved C-terminal oxysterol-binding protein-like sterol-binding domain. It binds multiple lipid-containing molecules,

including phosphatidylserine, phosphatidylinositol 4-phosphate (PI4P) and oxysterol, and promotes their exchange between the endoplasmic reticulum and the plasma membrane. Alternative splicing results in multiple transcript variants. [provided by RefSeq, Feb 2016],

Function :

similarity:Belongs to the OSBP family.,similarity:Contains 1 PH domain.,tissue specificity:Widely expressed.,

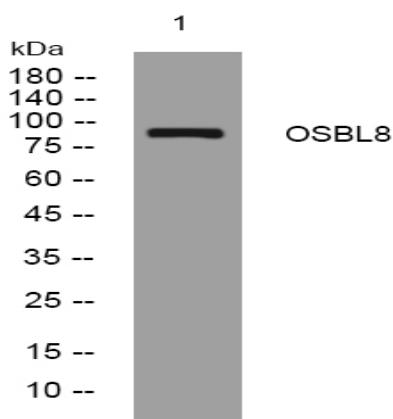
Subcellular Location :

[Isoform 1]: Endoplasmic reticulum membrane ; Single-pass membrane protein . Nucleus membrane . The presence of the N-terminus extension contains an overall negative charge that may explain the weak localization to the cortical endoplasmic reticulum (Probable). . ; [Isoform 3]: Endoplasmic reticulum membrane ; Single-pass membrane protein. Localizes to the cortical endoplasmic reticulum at the endoplasmic reticulum-plasma membrane contact sites. .

Expression :

Widely expressed (PubMed:11735225). Expressed at higher level in macrophages (PubMed:17991739).

Products Images



Western blot analysis of lysates from CACO2 cells, primary antibody was diluted at 1:1000, 4° over night