

KDEL1 rabbit pAb

Catalog No :	YT6401
Reactivity :	Human;Mouse
Applications :	WB;ELISA;IHC
Target :	KDEL1
Gene Name :	KDELC1 EP58 UNQ1910/PRO4357
Protein Name :	KDEL1
Human Gene Id :	79070
Human Swiss Prot No :	Q6UW63
Mouse Gene Id :	72050
Mouse Swiss Prot No :	Q9JHP7
Immunogen :	Synthesized peptide derived from human KDEL1 AA range: 4-54
Specificity :	This antibody detects endogenous levels of KDEL1 at Human/Mouse
Formulation :	Liquid in PBS containing 50% glycerol, 0.5% BSA and 0.02% sodium azide.
Source :	Polyclonal, Rabbit,IgG
Dilution :	WB 1:500-2000;IHC 1:50-300; ELISA 2000-20000
Purification :	The antibody was affinity-purified from rabbit antiserum by affinity-chromatography using epitope-specific immunogen.
Concentration :	1 mg/ml
Storage Stability :	-15°C to -25°C/1 year(Do not lower than -25°C)

Molecularweight : 55kD**Background :**

This gene encodes a protein product localized to the lumen of the endoplasmic reticulum. As a member of the endoplasmic reticulum protein family the encoded protein contains a Lys-Asp-Glu-Leu or KDEL motif located at the extreme C-terminus which prevents all endoplasmic reticulum resident proteins from being secreted. Proteins carrying this motif are bound by a receptor in the Golgi apparatus so that the receptor-ligand complex returns to the endoplasmic reticulum. A processed non-transcribed pseudogene located in an intron of a sodium transporter gene on chromosome 5 has been defined for this gene. This gene has multiple transcript variants which are predicted to encode distinct isoforms. [provided by RefSeq, Jan 2016],

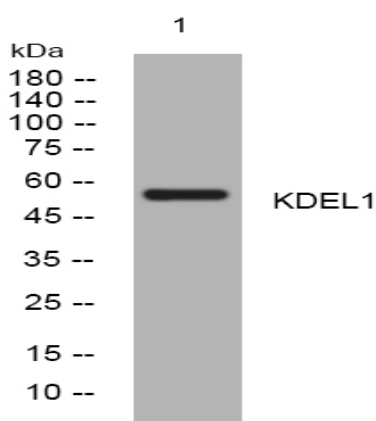
Function :

PTM:N-glycosylated.,similarity:Belongs to the KDELC family.,similarity:Contains 1 filamin repeat.,

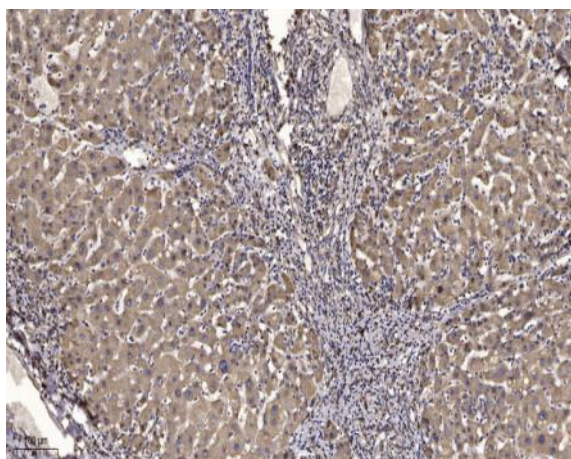
Subcellular Location :

Endoplasmic reticulum lumen .

Products Images



Western blot analysis of lysates from KB cells, primary antibody was diluted at 1:1000, 4° over night



Immunohistochemical analysis of paraffin-embedded human liver cancer. 1, Antibody was diluted at 1:200(4° overnight). 2, Tris-EDTA,pH9.0 was used for antigen retrieval. 3,Secondary antibody was diluted at 1:200(room temperature, 45min).