

p120 catenin (ABT-p120) Mouse mAb

Catalog No :	YM6752
Reactivity :	Human; Mouse; Rat
Applications :	WB; IHC;ELISA
Target :	p120 Catenin
Fields :	>>Rap1 signaling pathway;>>Adherens junction;>>Leukocyte transendothelial migration
Gene Name :	CTNND1 KIAA0384
Protein Name :	p120 catenin
Human Gene Id :	1500
Human Swiss Prot No :	O60716
Immunogen :	Synthesized peptide derived from human p120 catenin AA range: 600-700
Specificity :	This antibody detects endogenous levels of human p120 catenin. Heat-induced epitope retrieval (HIER) TRIS-EDTA of pH9.0 was highly recommended as antigen repair method in paraffin section
Formulation :	Liquid in PBS containing 50% glycerol, 0.5% BSA and 0.02% sodium azide.
Source :	Mouse, Monoclonal/IgG2b, Kappa
Dilution :	IHC 1:200-400, WB 1:100-2000, ELISA 1:5000-20000
Purification :	The antibody was affinity-purified from mouse ascites by affinity-chromatography using specific immunogen.
Storage Stability :	-15°C to -25°C/1 year(Do not lower than -25°C)
Molecularweight :	108kD

Background :

catenin delta 1 (CTNND1) Homo sapiens This gene encodes a member of the Armadillo protein family, which function in adhesion between cells and signal transduction. Multiple translation initiation codons and alternative splicing result in many different isoforms being translated. Not all of the full-length natures of the described transcript variants have been determined. Read-through transcription also exists between this gene and the neighboring upstream thioredoxin-related transmembrane protein 2 (TMX2) gene. [provided by RefSeq, Dec 2010],

Function :

alternative products:Experimental confirmation may be lacking for some isoforms,disease:May contribute to cell malignancy. Complete loss of expression was observed in approximately 10% of invasive ductal breast carcinomas investigated.,domain:A possible nuclear localization signal exists in all isoforms where Asp-626--631-Arg are deleted.,function:Binds to and inhibits the transcriptional repressor ZBTB33, which may lead to activation of target genes of the Wnt signaling pathway (By similarity). May associate with and regulate the cell adhesion properties of both C- and E-cadherins. Implicated both in cell transformation by SRC and in ligand-induced receptor signaling through the EGF, PDGF, CSF-1 and ERBB2 receptors. Promotes GLIS2 C-terminal cleavage.,induction:Induced in vascular endothelium by wounding. This effect is potentiated by prior laminar shear stress, which enhances wound clo

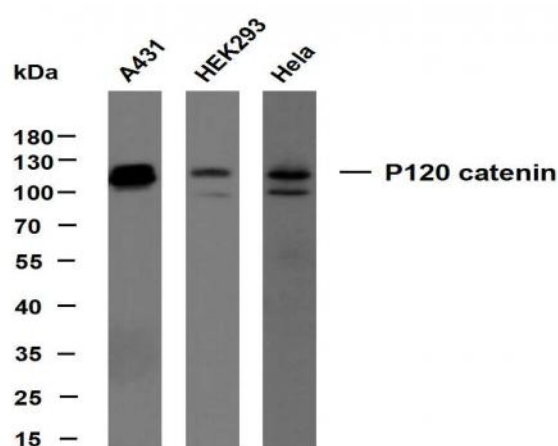
Subcellular Location :

Cytoplasmic, Membranous

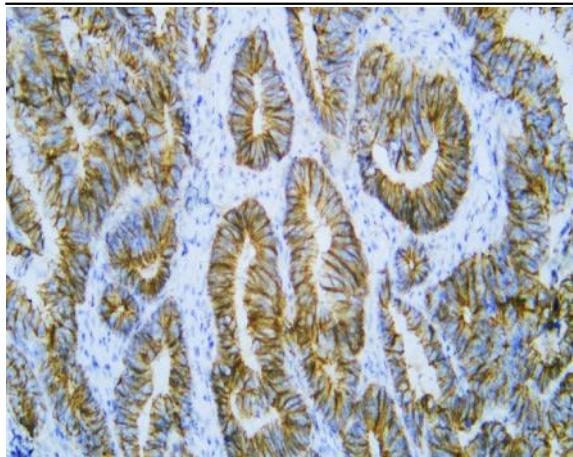
Expression :

Expressed in vascular endothelium. Melanocytes and melanoma cells primarily express the long isoform 1A, whereas keratinocytes express shorter isoforms, especially 3A. The shortest isoform 4A, is detected in normal keratinocytes and melanocytes, and generally lost from cells derived from squamous cell carcinomas or melanomas. The C-terminal alternatively spliced exon B is present in the p120ctn transcripts in the colon, intestine and prostate, but lost in several tumor tissues derived from these organs.

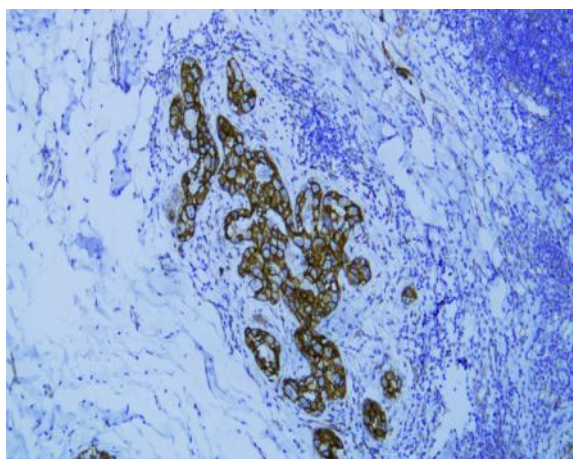
Products Images



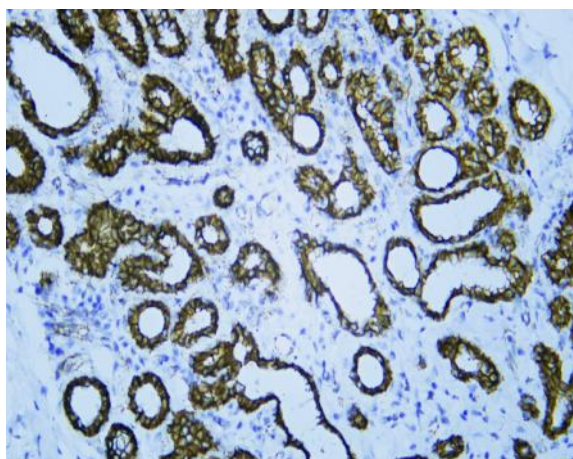
Various whole cell lysates were separated by 10% SDS-PAGE, and the membrane was blotted with anti-p120 catenin (ABT-p120) antibody. The HRP-conjugated anti-Mouse IgG antibody was used to detect the antibody. Lane 1: A431 Lane 2: HEK293 Lane 3: HeLa Predicted band size: 108kDa Observed band size: 110kDa



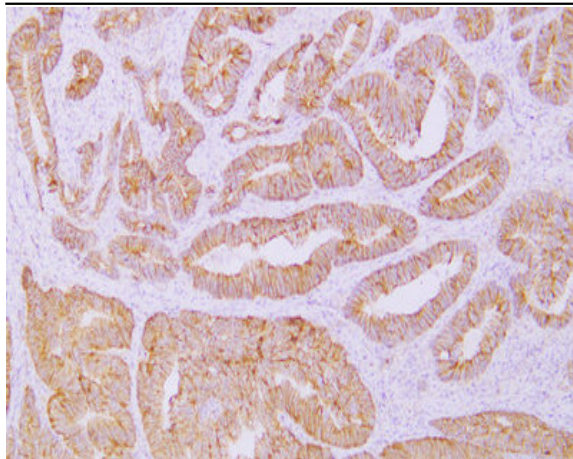
Human colon carcinoma tissue was stained with Anti-p120 catenin (ABT-p120) Antibody



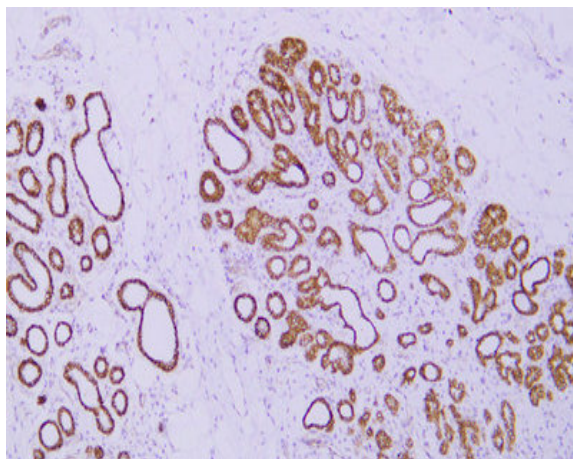
Human ductal carcinoma of breast tissue was stained with Anti-p120 catenin (ABT-p120) Antibody



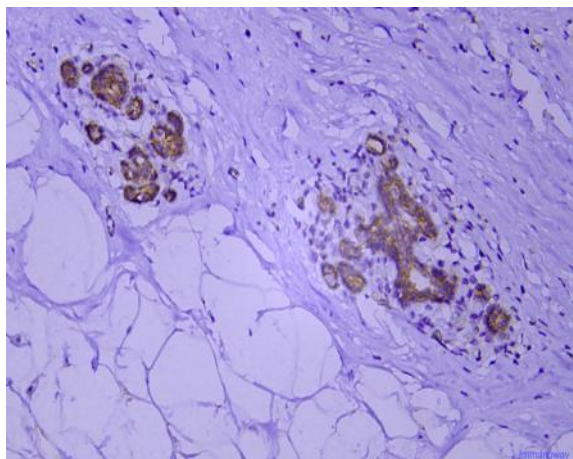
Human ductal carcinoma of breast tissue was stained with Anti-p120 catenin (ABT-p120) Antibody



Immunohistochemical analysis of paraffin-embedded Colon carcinoma. 1, Antibody was diluted at 1:200(4° overnight). 2, TRIS-EDTA of pH9.0 was used for antigen retrieval. 3,Secondary antibody was diluted at 1:200(room temperature, 30min).



Immunohistochemical analysis of paraffin-embedded Invasive ductal breast carcinoma. 1, Antibody was diluted at 1:200(4° overnight). 2, TRIS-EDTA of pH9.0 was used for antigen retrieval. 3,Secondary antibody was diluted at 1:200(room temperature, 30min).



Immunohistochemical analysis of paraffin-embedded human breast Antibody was diluted at 1:200(4° overnight).