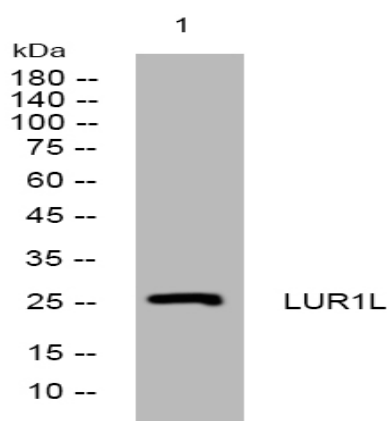


## LUR1L rabbit pAb

<b>Catalog No :</b>	YT6385
<b>Reactivity :</b>	Human;Mouse;Rat
<b>Applications :</b>	WB
<b>Target :</b>	LUR1L
<b>Gene Name :</b>	LURAP1L C9orf150 HYST0841
<b>Protein Name :</b>	LUR1L
<b>Human Gene Id :</b>	286343
<b>Human Swiss Prot No :</b>	Q8IV03
<b>Mouse Gene Id :</b>	52829
<b>Mouse Swiss Prot No :</b>	Q8K2P1
<b>Rat Gene Id :</b>	362535
<b>Rat Swiss Prot No :</b>	Q5BJW5
<b>Immunogen :</b>	Synthesized peptide derived from human LUR1L AA range: 142-192
<b>Specificity :</b>	This antibody detects endogenous levels of LUR1L at Human/Mouse/Rat
<b>Formulation :</b>	Liquid in PBS containing 50% glycerol, 0.5% BSA and 0.02% sodium azide.
<b>Source :</b>	Polyclonal, Rabbit,IgG
<b>Dilution :</b>	WB 1:500-2000
<b>Purification :</b>	The antibody was affinity-purified from rabbit antiserum by affinity-chromatography using epitope-specific immunogen.

**Concentration :** 1 mg/ml**Storage Stability :** -15°C to -25°C/1 year (Do not lower than -25°C)**Molecularweight :** 25kD**Function :** polymorphism: The poly-Gly region is polymorphic and the number of Gly varies in the population (from 9 to 12).

## Products Images



Western blot analysis of lysates from 3T3 cells, primary antibody was diluted at 1:1000, 4° over night