

## LCN12 rabbit pAb

<b>Catalog No :</b>	YT6384
<b>Reactivity :</b>	Human;Mouse;Rat
<b>Applications :</b>	WB;ELISA;IHC
<b>Target :</b>	LCN12
<b>Gene Name :</b>	LCN12
<b>Protein Name :</b>	LCN12
<b>Human Gene Id :</b>	286256
<b>Human Swiss Prot No :</b>	Q6JVE5
<b>Mouse Gene Id :</b>	77701
<b>Mouse Swiss Prot No :</b>	Q6JVL5
<b>Rat Swiss Prot No :</b>	B3EY83
<b>Immunogen :</b>	Synthesized peptide derived from human LCN12 AA range: 56-106
<b>Specificity :</b>	This antibody detects endogenous levels of LCN12 at Human/Mouse/Rat
<b>Formulation :</b>	Liquid in PBS containing 50% glycerol, 0.5% BSA and 0.02% sodium azide.
<b>Source :</b>	Polyclonal, Rabbit,IgG
<b>Dilution :</b>	WB 1:500-2000;IHC 1:50-300; ELISA 2000-20000
<b>Purification :</b>	The antibody was affinity-purified from rabbit antiserum by affinity-chromatography using epitope-specific immunogen.
<b>Concentration :</b>	1 mg/ml

**Storage Stability :** -15°C to -25°C/1 year (Do not lower than -25°C)

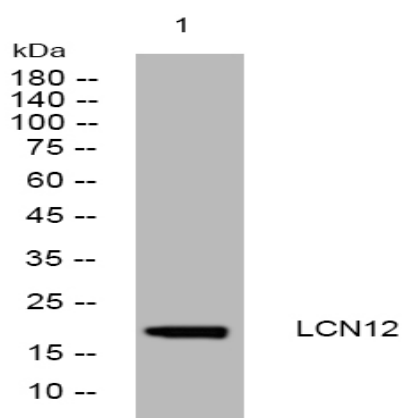
**Molecularweight :** 21kD

**Background :** Members of the lipocalin family, such as LCN12, have a common structure consisting of an 8-stranded antiparallel beta-barrel that forms a cup-shaped ligand-binding pocket or calyx. Lipocalins generally bind small hydrophobic ligands and transport them to specific cells (Suzuki et al., 2004 [PubMed 15363845]). [supplied by OMIM, Aug 2009],

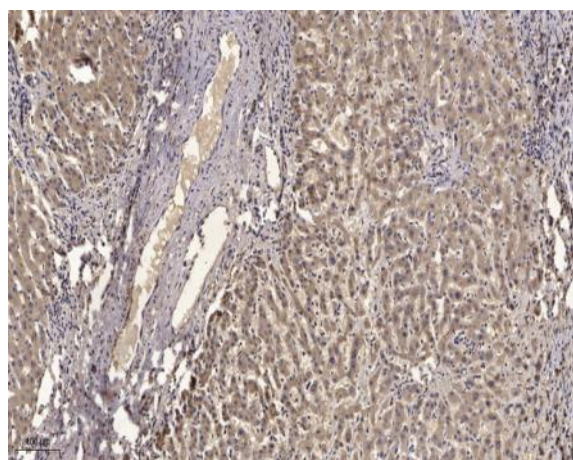
**Function :** function: May play a role in male fertility. May act as a retinoid carrier protein within the epididymis., similarity: Belongs to the calycin superfamily. Lipocalin family.,

**Subcellular Location :** Secreted .

## Products Images



Western blot analysis of lysates from MCF-7 cells, primary antibody was diluted at 1:1000, 4° over night



Immunohistochemical analysis of paraffin-embedded human liver cancer. 1, Antibody was diluted at 1:200 (4° overnight). 2, Tris-EDTA, pH 9.0 was used for antigen retrieval. 3, Secondary antibody was diluted at 1:200 (room temperature, 45 min).