

## LRWD1 rabbit pAb

<b>Catalog No :</b>	YT6382
<b>Reactivity :</b>	Human;Mouse
<b>Applications :</b>	WB;IHC
<b>Target :</b>	LRWD1
<b>Gene Name :</b>	LRWD1 ORCA
<b>Protein Name :</b>	LRWD1
<b>Human Gene Id :</b>	222229
<b>Human Swiss Prot No :</b>	Q9UFC0
<b>Mouse Gene Id :</b>	71735
<b>Mouse Swiss Prot No :</b>	Q8BUI3
<b>Immunogen :</b>	Synthesized peptide derived from human LRWD1 AA range: 395-445
<b>Specificity :</b>	This antibody detects endogenous levels of LRWD1 at Human/Mouse
<b>Formulation :</b>	Liquid in PBS containing 50% glycerol, 0.5% BSA and 0.02% sodium azide.
<b>Source :</b>	Polyclonal, Rabbit,IgG
<b>Dilution :</b>	WB 1:500-2000;IHC 1:50-300
<b>Purification :</b>	The antibody was affinity-purified from rabbit antiserum by affinity-chromatography using epitope-specific immunogen.
<b>Concentration :</b>	1 mg/ml
<b>Storage Stability :</b>	-15°C to -25°C/1 year(Do not lower than -25°C)

**Molecularweight :** 71kD

**Background :**

The protein encoded by this gene interacts with components of the origin recognition complex (ORC) and regulates the formation of the prereplicative complex. The encoded protein stabilizes the ORC and therefore aids in DNA replication. This protein is required for the G1/S phase transition of the cell cycle. In addition, the encoded protein binds to trimethylated histone H3 in heterochromatin and recruits the ORC and lysine methyltransferases, which help maintain the repressive heterochromatic state. Two transcript variants encoding different isoforms have been found for this gene. [provided by RefSeq, Dec 2015],

**Function :**

PTM:Phosphorylated upon DNA damage, probably by ATM or ATR.,similarity:Contains 3 LRR (leucine-rich) repeats.,similarity:Contains 5 WD repeats.,

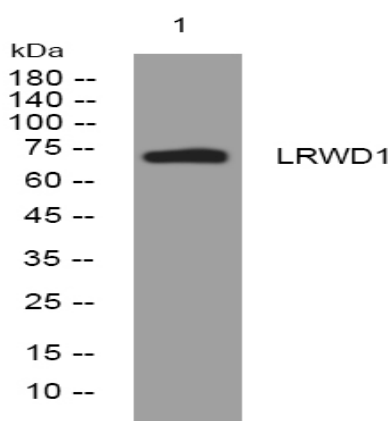
**Subcellular Location :**

Nucleus . Chromosome, centromere. Chromosome, telomere. Cytoplasm, cytoskeleton, microtubule organizing center, centrosome . Chromosome, centromere, kinetochore . Localizes to heterochromatin during G1 phase. Restricted to centromeres or telomeres as cells progress through S phase. When cells enter mitosis, relocates to centromeres. Recruitment to pericentric heterochromatin largely depends on the presence of H3K9me3.

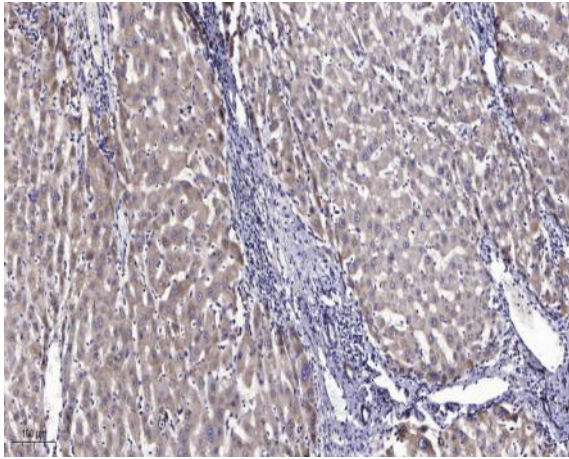
**Expression :**

Testis-specific. Drastically down-regulated in testis from patients with Sertoli cell-only syndrome (SCOS).

## Products Images



Western blot analysis of lysates from PC-12 cells, primary antibody was diluted at 1:1000, 4° over night



Immunohistochemical analysis of paraffin-embedded human liver cancer. 1, Antibody was diluted at 1:200(4° overnight). 2, Tris-EDTA,pH9.0 was used for antigen retrieval. 3,Secondary antibody was diluted at 1:200(room temperature, 45min).