

## LCOR rabbit pAb

<b>Catalog No :</b>	YT6380
<b>Reactivity :</b>	Human;Mouse
<b>Applications :</b>	WB;IHC
<b>Target :</b>	LCOR
<b>Gene Name :</b>	LCOR KIAA1795 MLR2
<b>Protein Name :</b>	LCOR
<b>Human Gene Id :</b>	84458
<b>Human Swiss Prot No :</b>	Q96JN0
<b>Mouse Gene Id :</b>	212391
<b>Mouse Swiss Prot No :</b>	Q6ZPI3
<b>Immunogen :</b>	Synthesized peptide derived from human LCOR AA range: 244-294
<b>Specificity :</b>	This antibody detects endogenous levels of LCOR at Human/Mouse
<b>Formulation :</b>	Liquid in PBS containing 50% glycerol, 0.5% BSA and 0.02% sodium azide.
<b>Source :</b>	Polyclonal, Rabbit,IgG
<b>Dilution :</b>	WB 1:500-2000;IHC 1:50-300
<b>Purification :</b>	The antibody was affinity-purified from rabbit antiserum by affinity-chromatography using epitope-specific immunogen.
<b>Concentration :</b>	1 mg/ml
<b>Storage Stability :</b>	-15°C to -25°C/1 year(Do not lower than -25°C)

**Molecularweight :** 48kD

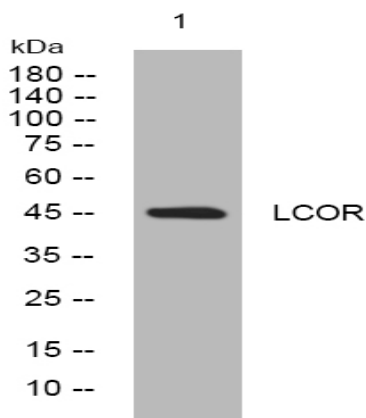
**Background :** LCOR is a transcriptional corepressor widely expressed in fetal and adult tissues that is recruited to agonist-bound nuclear receptors through a single LxxLL motif, also referred to as a nuclear receptor (NR) box (Fernandes et al., 2003 [PubMed 12535528]).[supplied by OMIM, Mar 2008],

**Function :** function:May act as transcription activator that binds DNA elements with the sequence 5'-CCCTATCGATCGATCTCTACCT-3' (By similarity). Repressor of ligand-dependent transcription activation by target nuclear receptors. Repressor of ligand-dependent transcription activation by ESR1, ESR2, NR3C1, PGR, RARA, RARB, RARG, RXRA and VDR.,similarity:Contains 1 HTH psq-type DNA-binding domain.,subunit:Interacts with ESR1 and ESR2 in the presence of estradiol. Interacts with CTBP1, HDAC3 and HDAC6. Component of a large corepressor complex that contains about 20 proteins, including CTBP1, CTBP2, HDAC1 and HDAC2.,tissue specificity:Ubiquitous.,

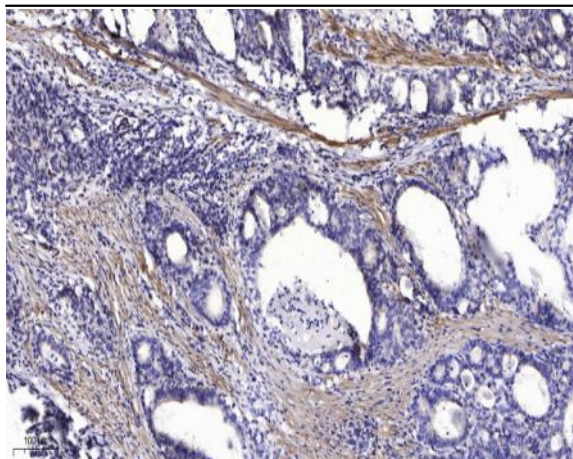
**Subcellular Location :** Nucleus .

**Expression :** Ubiquitous.

## Products Images



Western blot analysis of lysates from HpeG2 cells, primary antibody was diluted at 1:1000, 4° over night



Immunohistochemical analysis of paraffin-embedded human Gastric adenocarcinoma. 1, Antibody was diluted at 1:200(4° overnight). 2, Tris-EDTA,pH9.0 was used for antigen retrieval. 3,Secondary antibody was diluted at 1:200(room temperature, 45min).